


You're my witnesses  
Isaiah 43

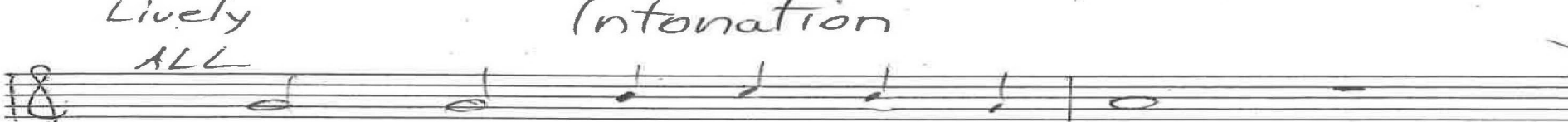
12-20  
5-22  
3-24

Chris Nelson 2018 Chris Nelson 2018

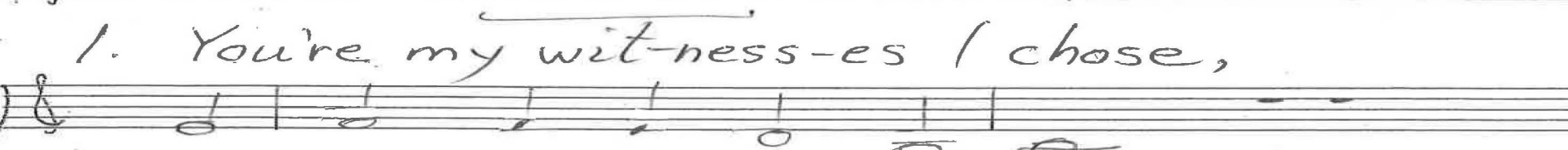
Lively  
ALL



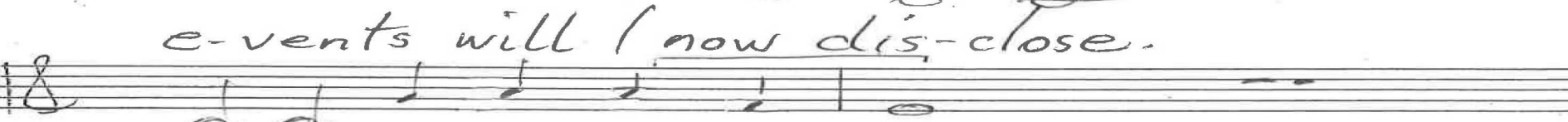
p. 1/5  
Isaiah 43  
Chris Nelson 2018



1. You're my witness-es I chose,  
e-vents will I now dis-close.



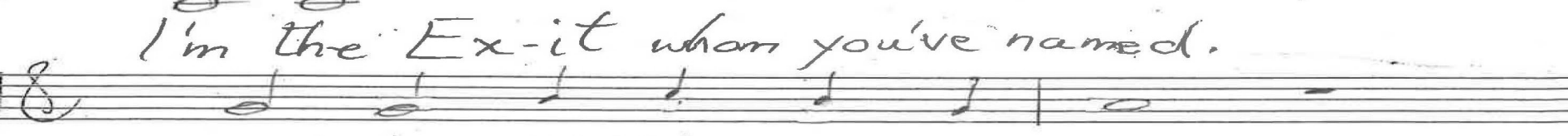
It is I who have pro-claimed



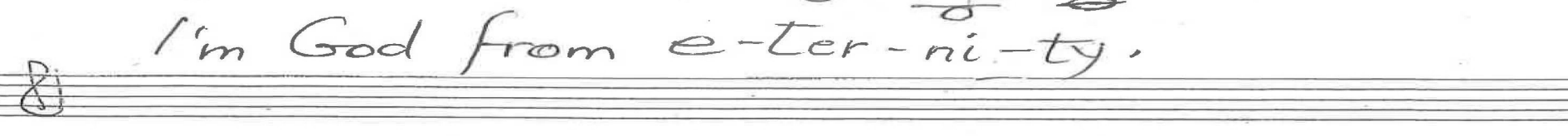
I'm the Ex-it whom you've named.



Eyes for me, you right-ly see



I'm God from e-ter-ni-ty.



12-20  
5-22  
9-23  
3-24

W  
Musical staff with treble clef, key signature of one flat, and a whole note chord.

2. Thus says God, the Ho-ly One,  
Musical staff with treble clef, key signature of one flat, and a whole note chord.

I'll do what I've just be-gun.  
Musical staff with treble clef, key signature of one flat, and a whole note chord.

For your sake I'll send my might  
Musical staff with treble clef, key signature of one flat, and a whole note chord.

out to Bab-ylon to fight,  
Musical staff with treble clef, key signature of one flat, and a whole note chord.

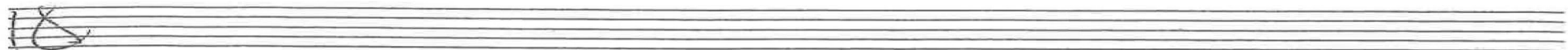
break-ing down the pris-on wall  
Musical staff with treble clef, key signature of one flat, and a whole note chord.

to make the Chal-de-ans bawl.  
Musical staff with treble clef, key signature of one flat, and a whole note chord.

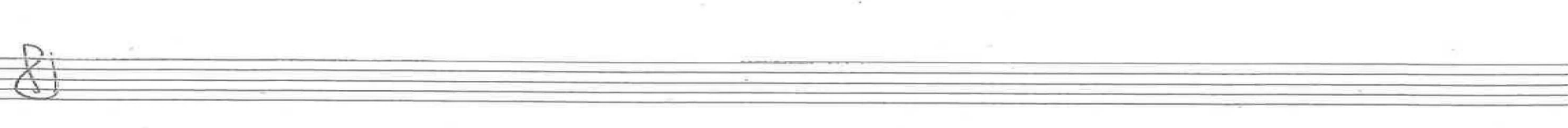
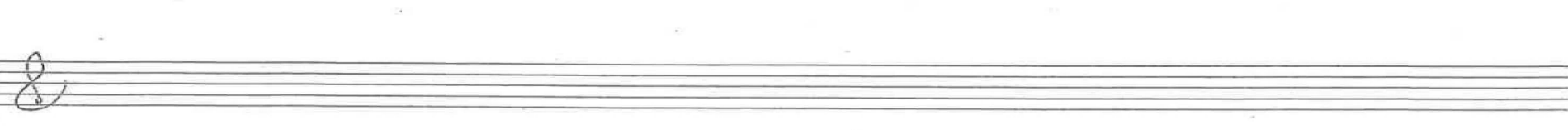
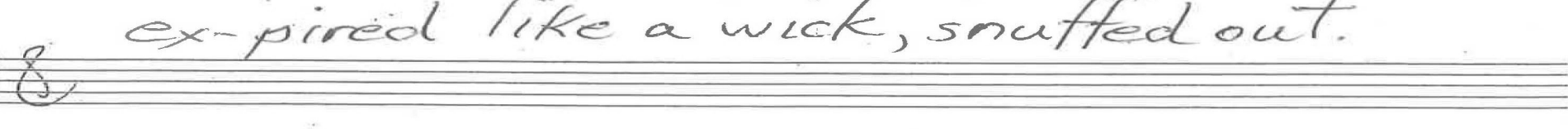
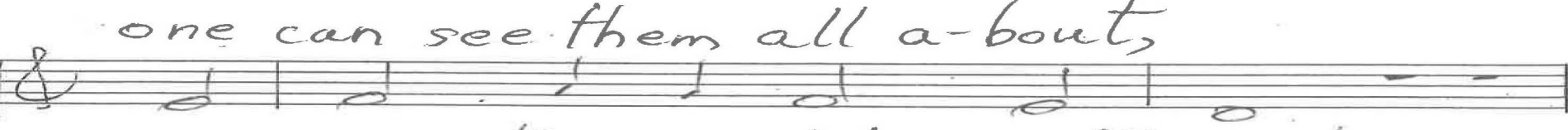
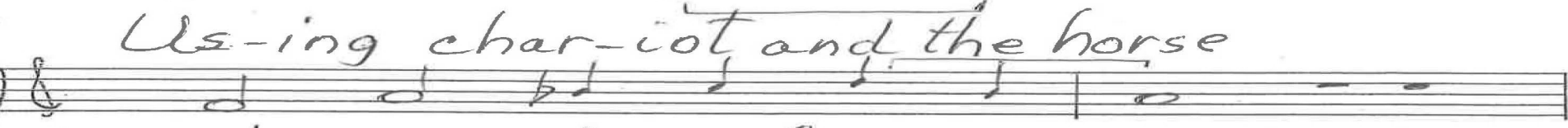
Empty musical staff with treble clef and key signature of one flat.

Empty musical staff with treble clef and key signature of one flat.

p. 2/5 / Sarah 43 Chris Nelson 2018



12-20  
5-22



p. 3/5  
Isaiah 43  
Chris Nelson 2018

12-20  
5-22  
9-23  
7-24

W  
Musical staff with treble clef and 8/8 time signature. The staff contains a melody starting with a whole note, followed by quarter notes, and ending with a half note.

4. Need-less, dredg-ing up the past,

Musical staff with treble clef and 8/8 time signature. The staff contains a melody starting with a whole note, followed by quarter notes, and ending with a half note.

what's done has to be re-cast.

Musical staff with treble clef and 8/8 time signature. The staff contains a melody starting with a whole note, followed by quarter notes, and ending with a half note.

Look, I'll am-pli-fy your sight,

Musical staff with treble clef and 8/8 time signature. The staff contains a melody starting with a whole note, followed by quarter notes, and ending with a half note.

ev-en now it comes to light.

Musical staff with treble clef and 8/8 time signature. The staff contains a melody starting with a whole note, followed by quarter notes, and ending with a half note.

No-tice pan-o-ram-ic views,

Musical staff with treble clef and 8/8 time signature. The staff contains a melody starting with a whole note, followed by quarter notes, and ending with a half note.

or-deals that be-come good news.

Musical staff with treble clef and 8/8 time signature. The staff contains a whole note.

Musical staff with treble clef and 8/8 time signature. The staff contains a whole note.

Musical staff with treble clef and 8/8 time signature. The staff contains a whole note.

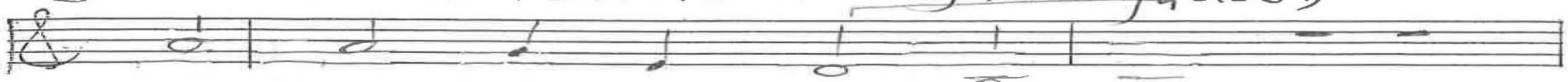
p. 4/5  
isaiah 43  
Chris Nelson 2018

12-20  
5-22  
3-24

ALL



5. Jack-als let me through the field,



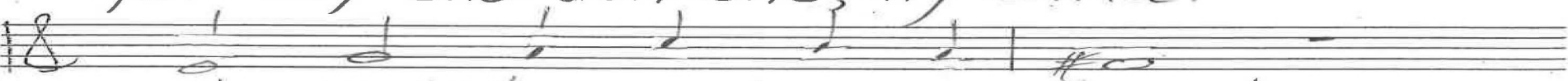
the beasts for their Mak-er yield,



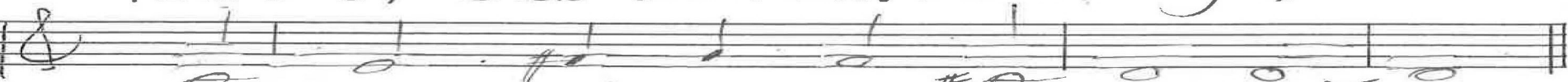
Yes, I'm wa-ter-ing the wild,



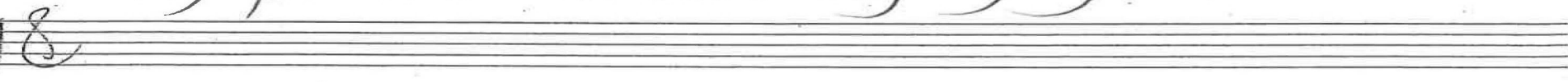
for my cho-sen one, my child.



Years of Sab-bath will be through,



my praise will be sung by you.



p. 5/5 Sarah 43 Chris Nelson 2018

ALL

Infonation Chorale

1. You're my witnesses

In C

Handwritten musical notation for the first system. The vocal line is in treble clef with a 2/4 time signature. The organ accompaniment is in bass clef. The lyrics "1. You're my witnesses" are written above the vocal line. The word "ALL" is written above the first measure. The word "Infonation" is written above the first measure, and "Chorale" is written below it. The key signature is one sharp (F#). The organ part features chords and moving lines in the left hand.

10-19  
12-20  
9-21  
5-22  
12-22  
9-23  
3-24

Organ p. 1/4

Handwritten musical notation for the second system, organ accompaniment. It continues from the first system with chords and moving lines in the left hand.

Handwritten musical notation for the third system, organ accompaniment. It continues from the second system with chords and moving lines in the left hand.

Isaiah 43

W

2. Thus says God, Lord,

In e<sup>b</sup>

Handwritten musical notation for the fourth system. The vocal line is in treble clef with a 2/4 time signature. The organ accompaniment is in bass clef. The lyrics "2. Thus says God, Lord," are written above the vocal line. The word "W" is written above the first measure. The key signature is one flat (Bb). The organ part features chords and moving lines in the left hand.

Chris Nelson 2018

Keep us steadfast in your word

Handwritten musical notation for the fifth system, organ accompaniment. It continues from the fourth system with chords and moving lines in the left hand.

10 19  
12 20  
9 21  
7 22  
12 22  
9 23  
3 24

Organ p. 2/4

M

3. Waters destined

In d, Genevan 135

Sarah 43

Chris Nelson 2018

W In g, v. 2 inverted

4. Needless

10-19  
12-20  
7-21  
5-22  
12-23  
9-23  
3-24

Organ p. 3/4

ALL  
5. Jackals  
ING

Saich 43

Chris Nelson 2024



Chorus

Sw 10-19  
12-20  
9-21  
5-22  
12-22  
9-23  
3-24

Organ p: 4/4

Saiah 43

Chris Nelson: 2014