

To mothers
Proverbs 10

12-20
522

Chris Nelson 2018 Chris Nelson 2018

Intonation

ALL

1. To moth-ers one sloth is a both-er,

Sons who are wise de-light a fath-er,

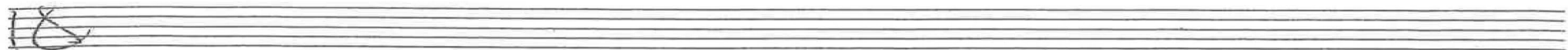
learn what their par-ents are sup-port-ing.

Those who in-dulge them-selves in trea-sure

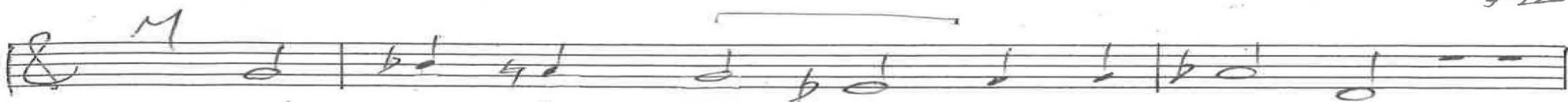
can't ev-en ben-i-fit from leis-ure

for God their greed is ev-er thwart-ing.

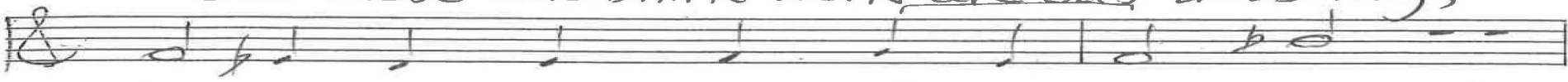
P. 1/4 Proverbs 10 Chris Nelson 2018



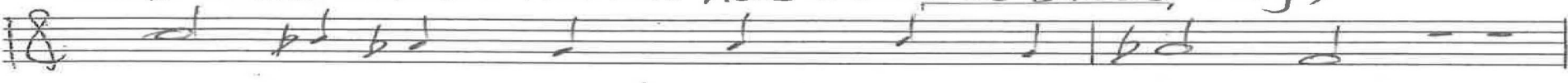
12-20
5-22



2. But those who shirk work, are dis-tress-ing,



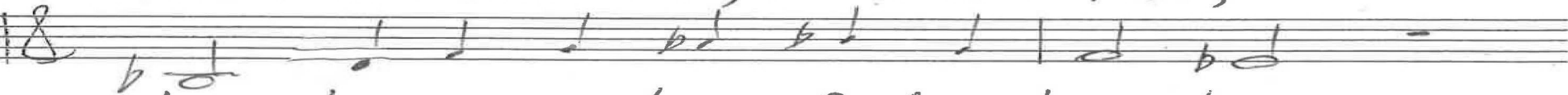
not those whose name has been a bless-ing,



hand on the plough with har-vest near-ing,



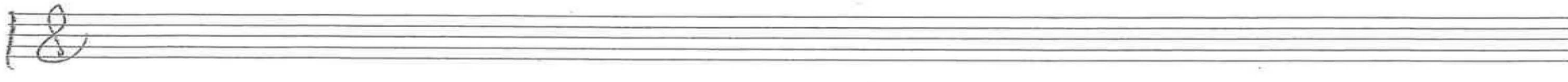
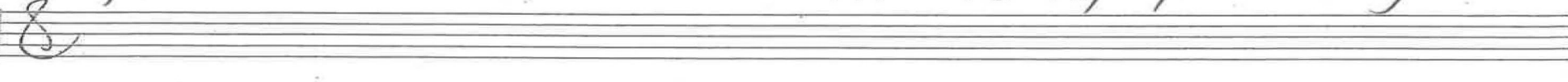
when in the sum-mer, ev-er aim-less,



sleep is a symp-tom of the shame-less,



from one slack deed a thorn's ap-pear-ing.



p. 2/4 Proverbs 10 Chris Nelson 2018

12-20
5-22

Handwritten musical notation on a single staff, featuring a treble clef, a common time signature (C), and a whole note (w) above the first measure. The notes are: G4, A4, B4, C5, B4, A4, G4, F4, E4, D4, C4.

3, The good is what folks will re-mem-ber,

ash is the end of ev-ery em-ber,

pay-ment for those who cast as-per-sions,

Hearts ev-er wise o-bey in-struc-tion,

pass with as-sur-ance through se-duc-tion,

while dodg-ing vil-lain-ous per-ver-sions.

p 3/4 Proverbs 10 Chris Nelson 2018

Blank musical staff with a treble clef and common time signature.

Blank musical staff with a treble clef and common time signature.

12-20
5-22

ALL

4. To wink at what's wrong, is de-ceiv-ing,

peace comes by ven-ture-some be-liev-ing,

flows from a life with-out pre-tens-es.

Lips are a source of de-vas-ta-tion,

hate may pro-voke a con-fron-ta-tion,

but love can cov-er all of-fens-es.

p. 4/4 Proverbs 10 Chris Nelson 2018

Intonation
Gt

ALL
1. To mothers

10-19
12-20
9-21
5-22
12-22
9-23
3-24

In d, Geneva 112

M

2. But those

In E^b

Organ p. 1/3

Proverbs 10

Chris Nelson 2018

Handwritten musical notation for the first system, featuring a treble and bass clef staff with various notes and rests.

10-19
12-20
9-21
3-22
12-22
9-23
3-24

Organ p. 2/3

Handwritten musical notation for the second system, including the text "The good" and "In F, v. 2 inverted".

In F, v. 2 inverted

Handwritten musical notation for the third system, showing complex chordal structures in the bass staff.

Proverbs 10

Handwritten musical notation for the fourth system, featuring a "rit" marking and complex bass staff chords.

To wink In D (v. 2)
ALL

Chris Nelson 2018

Handwritten musical notation for the fifth system, including a "rit" marking and complex bass staff chords.

Handwritten musical score for the first system. Treble clef staff contains a melody with slurs and accidentals. Bass clef staff contains accompaniment. A vertical list of numbers is on the right side of the system.

10	19
12	20
9	21
5	22
12	23
4	24

Handwritten musical score for the second system. Treble clef staff contains a melody with slurs and accidentals. Bass clef staff contains accompaniment. The word "express." is written above the treble staff.

Handwritten musical score for the third system. Treble clef staff contains a melody with slurs and accidentals. Bass clef staff contains accompaniment. The word "Coda" is written above the treble staff.

Handwritten musical score for the fourth system. Treble clef staff contains a melody with slurs and accidentals. Bass clef staff contains accompaniment.

Handwritten musical score for the fifth system. Treble clef staff contains a melody with slurs and accidentals. Bass clef staff contains accompaniment. The text "Gn. 112" is written below the treble staff.

Organ p.3/3
 Proverbs 10
 Chris Nelson 2018