

Argue well  
Psalm 109

1-20  
12-20  
1-21  
5-22  
3-24

Chris Nelson 2018 Chris Nelson 2018

Intonation

Musical notation on a single staff showing a series of notes with a bracket above them, indicating an intonation exercise.

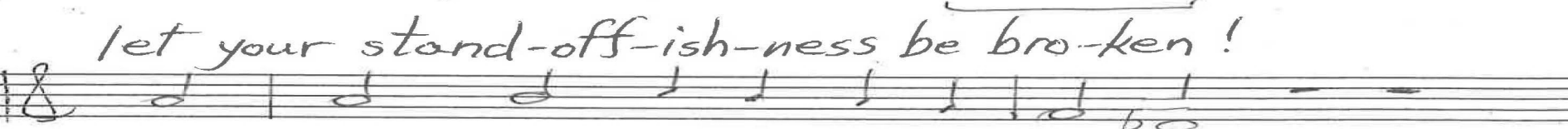
ALL

Musical notation on a single staff starting with the word 'ALL' and followed by a series of notes.

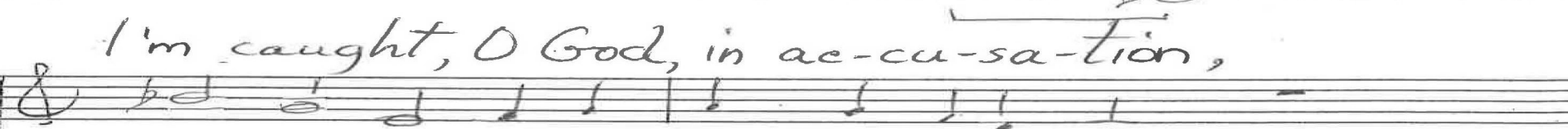
1. Ar-gue well when the truth is spo-ken,

Musical notation on a single staff corresponding to the lyrics.

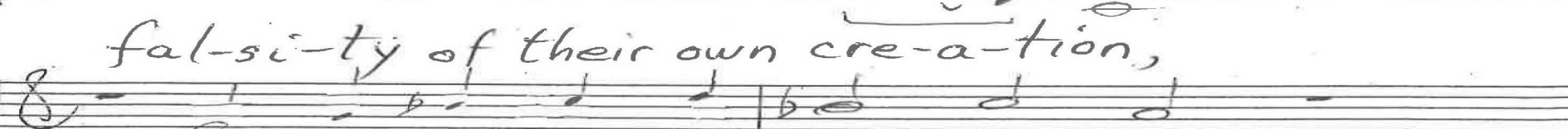
let your stand-off-ish-ness be bro-ken!

Musical notation on a single staff corresponding to the lyrics.

I'm caught, O God, in ac-cu-sa-tion,

Musical notation on a single staff corresponding to the lyrics.

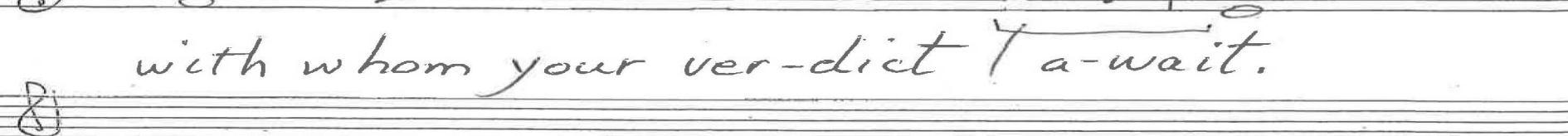
fal-si-ty of their own cre-a-tion,

Musical notation on a single staff corresponding to the lyrics.

the wick-ed, who at-tack with hate,

Musical notation on a single staff corresponding to the lyrics.

with whom your ver-dict I a-wait.

Musical notation on a single staff corresponding to the lyrics.

p. 1/8 Psalm 109 Chris Nelson 2018

1-20  
12-20  
1-21  
5-22  
-2-4

M

2. Coun-ter them for the way they're pounc-ing,

though I'm con-sol-ing, they're de-nounc-ing -

Ap-point a judge to do the try-ing,

charg-es framed by a liar ly-ing,

a guilt-y sen-tence ev-ery time,

pray-ing re-gard-ed as a crime:

p. 2/8 Psalm 109 Chris Nelson 2018



1-20  
12-20  
1-21  
5-22  
7-24



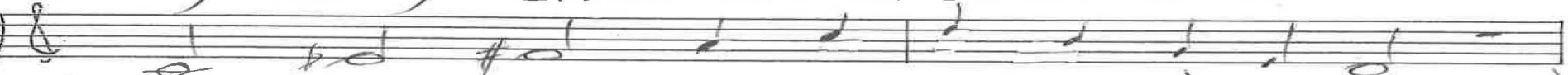
3. Re-pri-mand-ed, re-pu-di-at-ed,



for some-one else my of-fice stat-ed,



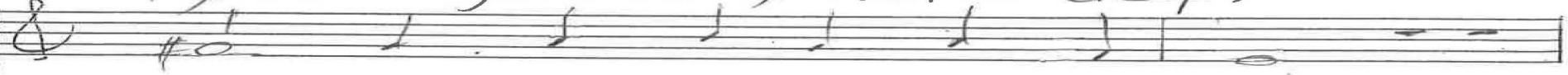
my ver-y child-ren al-so hound-ed



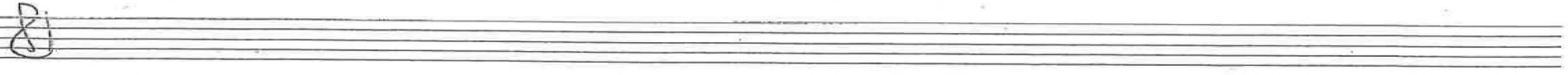
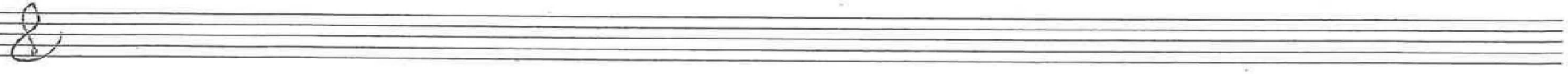
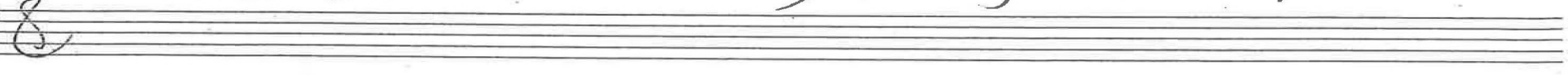
from their homes, by their fate a-stound-ed.



May stran-gers to my rich-es creep,



banks swal-low ev-ery-thing I reap.



p. 3/8  
Psalm 109  
Chris Nelson 2018

1-20  
12-20  
1-21  
5-22  
- 3-24

4. End my name with e-rad-i-ca-tion,

gone in a sin-gle gen-er-a-tion,

my fath-ers' sins to me be spread-ing,

slips my mind was for-ev-er dread-ing.

May God e-rase my life from birth,

wipe out my mem-ory from the earth!

p. 4/8 Psalm 109 Chris Nelson 2018





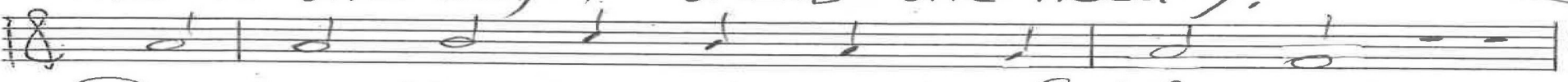
1-20  
12-20  
1-21  
5-22  
3-24



5. Purpose-ly to the pau-per greed-y,



this is the way I treat the need-y.



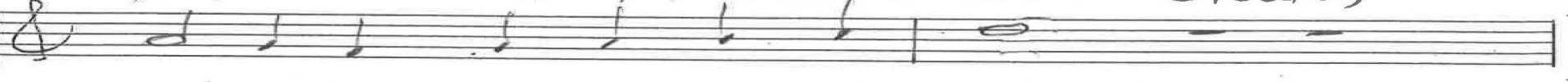
So far from me the taste of bless-ing,



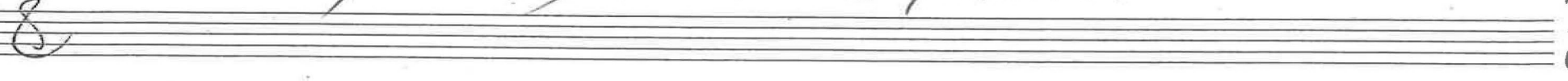
curs-es be, my re-ward, pos-sess-ing.



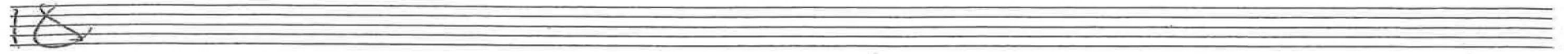
I wore them like a man-tle-cloak,



in-to my bod-y let them poke!



p. 5/8 Psalm 109 Chris Nelson 2018



1-20  
12-20  
1-21  
5-22  
7-24



6. Let this show us the way ac-cus-ers



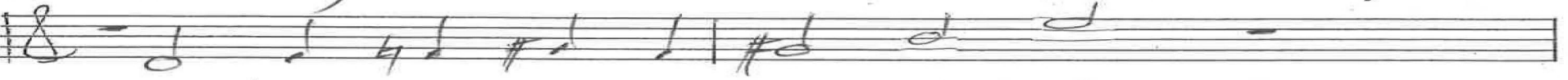
end up as if they were the los-ers.



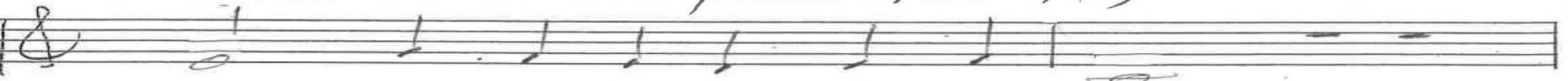
Though bold and tuned to your u-nique-ness,



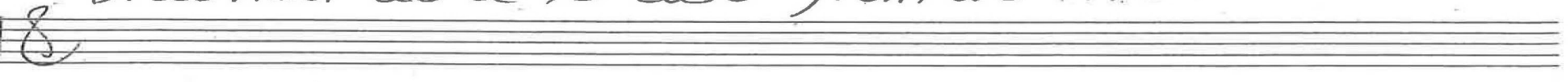
still my heart is re-duced to weak-ness,



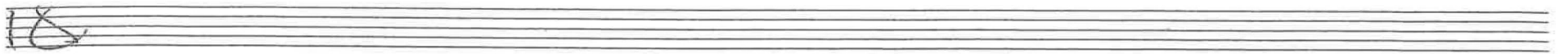
a shad-ow in the place of strife,



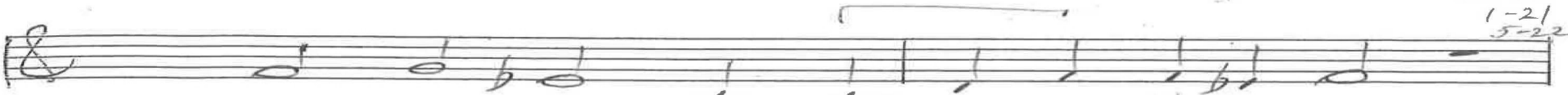
brushed as a lo-cust from its life.



p. 6/8 Psalm 109 Chris Nelson 2018



1-20  
12-20  
1-21  
5-22



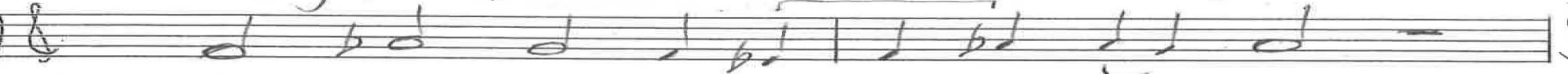
7. Once I thrived and my bod-y flour-ished,



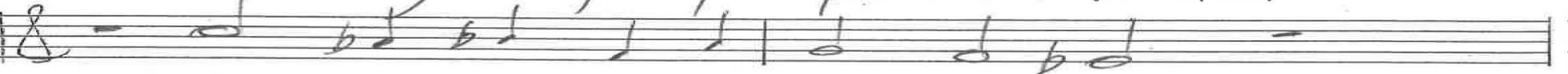
now on-ly weak and un-der-nour-ish-ed,



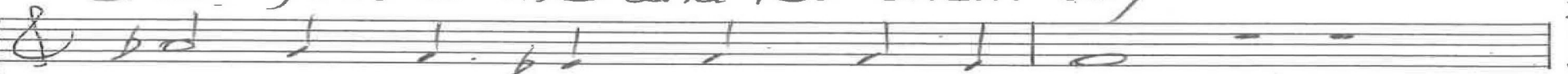
an ob-ject taunt-ed in de-ri-sion,



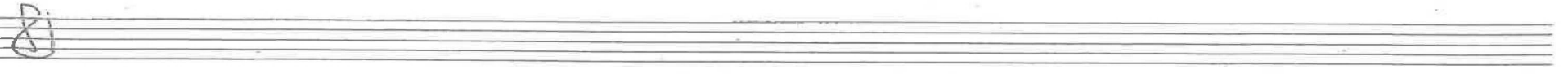
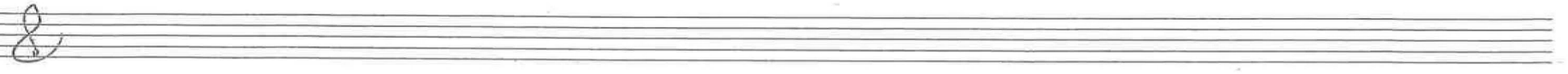
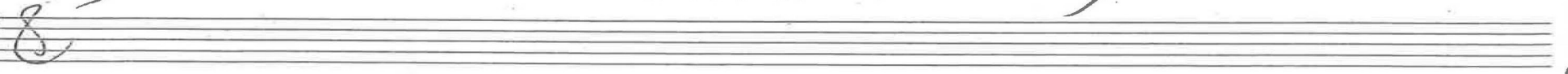
scorned by all for pro-phet-ic vi-sion.



But fost-er me and let them say



you are the God that I o-bey.



p. 1/8 Psalm 109 Chris Nelson 2018

18

1-20  
12-20  
1-21  
5-22

ALL

8. Turn right here when your face is smiling,

Let me re-joice and be com-pit-ing

my gra-ti-tude, a-loud and clear-ly,

with a throng I es-teem sin-cere-ly,

for man-ag-ing a true de-fense,

life in a hap-py pre-sent tense.

18

18

p. 8/8 Psalm 109 Chris Nelson 2018

8 Intonation Gt Gn 109 1. Argue well.

10-19  
6-20  
12-20  
9-21  
5-22  
12-22  
9-23  
3-24

He who would valiant be (motto) (87) In d 3rds rising v. 1-6

Organ p. 1/6

Th → v. 8 (27!)

Psalm 109

2. Counter them In b

Chris Nelson 2020



Handwritten musical notation for the first system, featuring a treble clef and a 4/4 time signature. The melody is written on the upper staff, and the accompaniment is on the lower staff. The word "express." is written above the melody. The system concludes with a double bar line and a fermata.

10-19  
6-20  
12-20  
9-21  
7-22  
12-22  
9-23  
3-24

Organ p. 2/6

Handwritten musical notation for the second system. The melody begins with a fermata and a "w" marking above it. The word "Reprimanded" is written in the center of the system. The system ends with a double bar line and a fermata.

In G

Handwritten musical notation for the third system, consisting of a treble clef staff with a melody and a bass clef staff with accompaniment. The system concludes with a double bar line and a fermata.

Palm 109

Handwritten musical notation for the fourth system, featuring a treble clef and a 4/4 time signature. The melody is on the upper staff, and the accompaniment is on the lower staff. The system ends with a double bar line and a fermata.

In e

Handwritten musical notation for the fifth system. The melody begins with a fermata and a "4." marking above it. The word "End my name" is written in the center of the system. The system ends with a double bar line and a fermata.

Chris Nelson: 2020

10-19  
6-20  
12-20  
9-21  
5-22  
12-22  
9-23  
3-24

Organ p. 3/6

5. Purposely

In C

Psalms 109

Chris Nelson 2020

8

b. Let this be

10-19  
6-20  
12-20  
9-21  
5-22  
12-22  
9-23  
3-24

Organ p. 4/6

In a

Psalm 109

7. Once I thrived

Chris Nelson 2020

In f, Geneva. 109

10-19  
6-20  
12-20  
9-21  
5-22  
12-22  
9-23  
3-24

Th ALL

8. Turn my way

you are the God that I obey In D (v. 1)

express Th

Coda

(molto)

Organ p. 5/6  
Psalm 109  
Chris Nelson 2020



Handwritten musical notation on a grand staff (treble and bass clefs). The notation includes various chords and melodic lines. A handwritten "Th" is present in the first measure of the treble clef. The right-hand side of the page contains a list of numbers: 10-19, 6-20, 12-20, 9-21, 5-22, 12-22, 9-23, 5-24.

Handwritten musical notation on a grand staff. The notation includes various chords and melodic lines. A handwritten "4" is present in the first measure of the bass clef. A handwritten "SW" is present in the second measure of the bass clef. A handwritten "RH" is present in the third measure of the bass clef.

Empty grand staff (treble and bass clefs).

Empty grand staff (treble and bass clefs).

Empty grand staff (treble and bass clefs).

Organ p. 6/6  
Psalm 109  
Chris Nelson, 2020