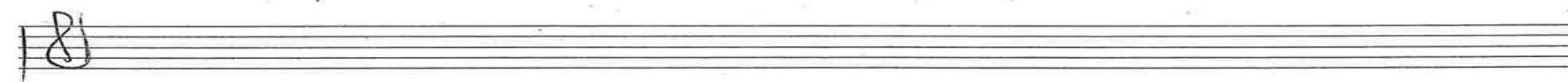
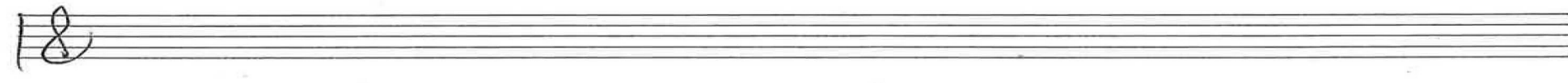
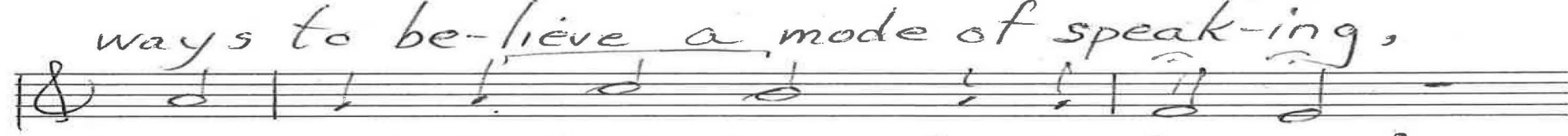
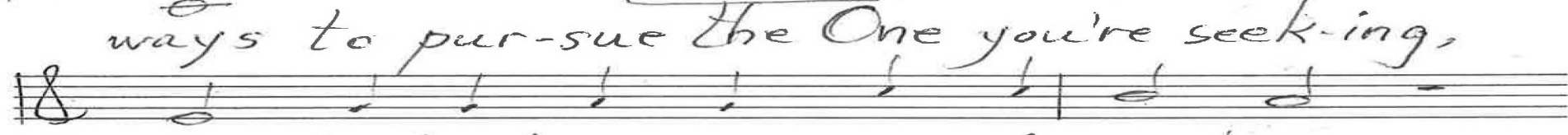
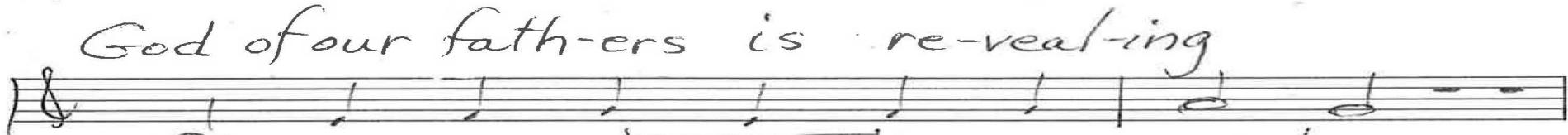
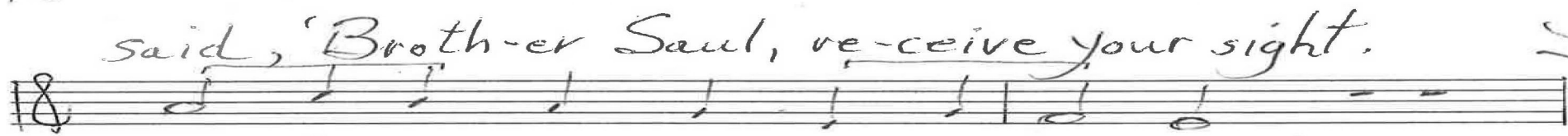
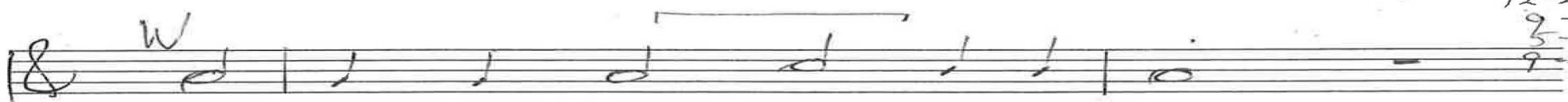




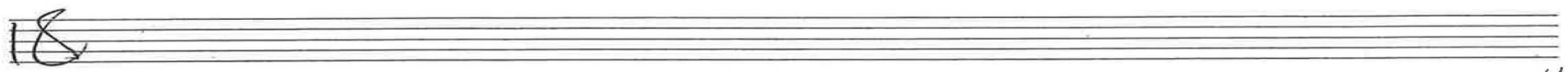




11-19  
12-20  
9-21  
5-22  
9-23



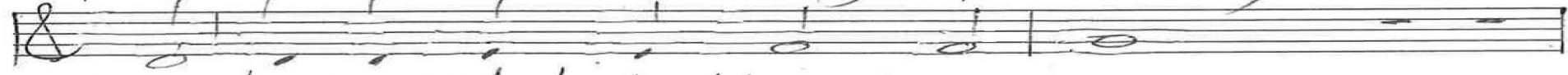
p. 3/4 Acts 22 Chris Nelson 2018



11-19  
12-20  
9-21  
5-22  
9-23



4. From dark-ness to light, that they rise,



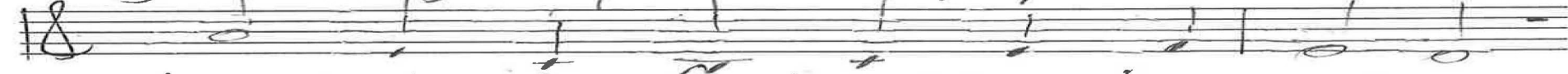
I send you out to bless their eyes,



mouth for the word to ev-ery na-tion,



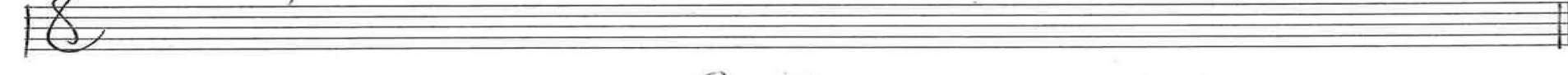
guard of your pre-sent ap-par-i-tions,



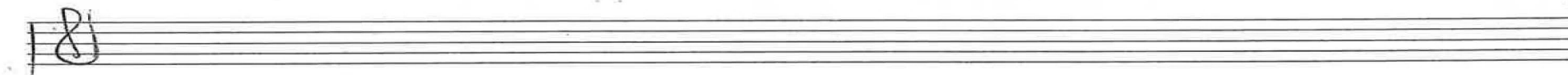
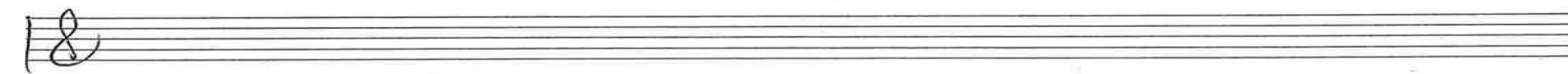
heard by their faith and through your mis-sions



their par-don from sin, their sal-va-tion.



Coda



p. 4/4 Acts 22 Chris Nelson 2018

Intonation

Gn 83

1. In route to

10-19  
12-20  
7-21  
5-22  
12-23  
9-23  
3-24

In c

bring back

M

They saw

In. b

the bright light

Organ p. 1/3

Facts 22

Chris Nelson 2018

10-19  
12-20  
9-21  
5-22  
12-22  
9-23  
3-24

Organ p. 2/3

3. A Christian

In e, Genevan 83

made sense

Pts 22

Chris Nelson 2018

ALL In e (v. 1)

4. From darkness

Handwritten musical notation for the first system, including a treble clef staff with the lyrics "to light" and a bass clef staff with rhythmic notation.

10-19  
12-20  
7-21  
5-22  
12-22  
9-13  
3-14

I heard the voice of Jesus say

Organ p.3/3

Handwritten musical notation for the second system, including a treble clef staff and a bass clef staff with rhythmic notation.

Coda v.2

Acts 22

Handwritten musical notation for the third system, including a treble clef staff and a bass clef staff with rhythmic notation.

Chris Nelson 2023

Handwritten musical notation for the fourth system, including a treble clef staff and a bass clef staff with rhythmic notation.

Handwritten musical notation for the fifth system, including a treble clef staff and a bass clef staff with rhythmic notation.

sw