

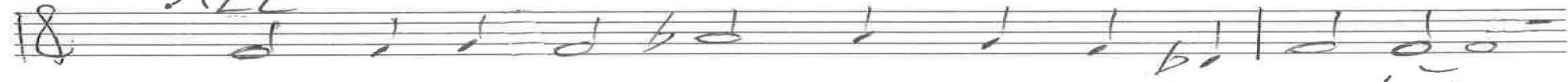
18 Save us, O Lord
Psalm 12

2-21
7-22

18 Chris Nelson 2018 Chris Nelson



ALL Intonation

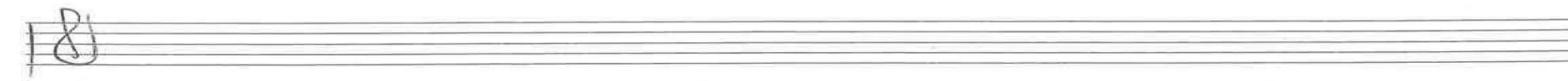
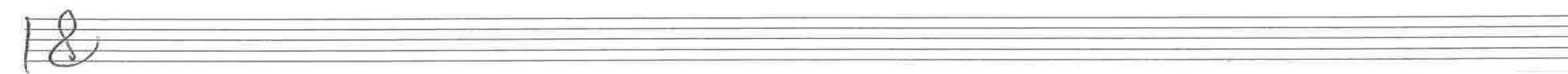


1. Save us, O Lord, you source of our de-vot-ion,

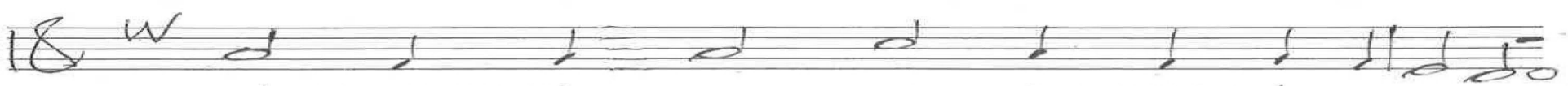
for faith has gone out from the hu-man race!

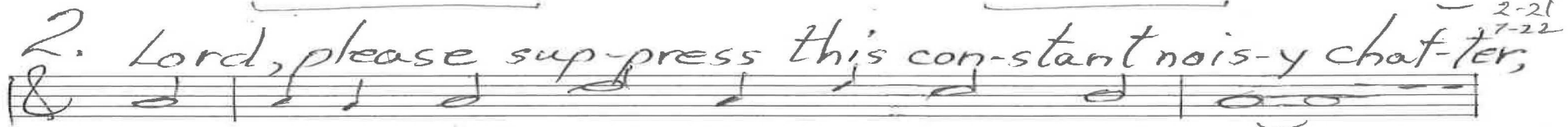
Fools and baf-foons are stir-ring up com-mo-tion,

with mon-a-logue smooth and a pho-n y face.



p. 1/3 Psalm 12
Chris Nelson 2018

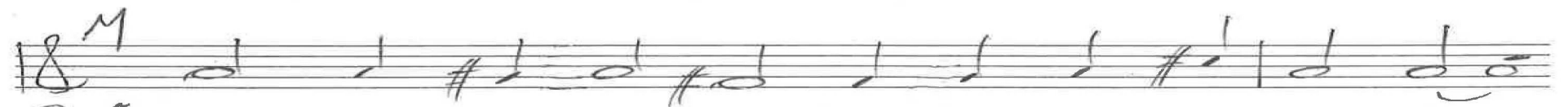
18 W 

2. Lord, please sup-press this con-stant nois-y chat-ter, 2-21
7-22


each li-ar who thinks they can seize con-trol,

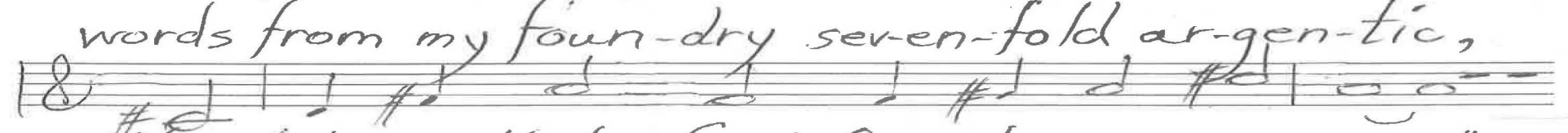

swanks who can boast their tongues will al-ways flat-ter,


'Our mes-sage has strength to de-feat their goal.'


18 ^M 

3. Now will I grant the need-y what's au-then-tic,


sal-va-tion and help that they're sigh-ing for,


words from my four-dry seven-fold ar-gen-tic,


like sil-ver that's freed from its com-mon ore."


p. 2/3 Psalm 12

Chris Nelson 2018

18

2-21
7-22

ALL

4. You are the one to hold us in your keep-ing

and shel-ter your folk who de-fy that breed.

Sin is a-live and well while we are sleep-ing,

with moun-tains of stuff in our midst in-deed.

18

18

18

18

18

p. 3/3
Psalm 12
Chris Nelson 2018

Gt Intonation

8-19
6-20
2-21
11-21
7-22
3-23
4-23

ALL
1. Save us

Inf (v. 4)

whole tone

Organ p. 1/4

Psalm 12

Chris Nelson 2020

2. Lord, please

8-19
6-20
2-21
11-21
7-22
3-23
11-23

In d, Geneva 12

In A, v. 1 inverted

3. Now will I grant

Organ p. 2/4
Psalm 12
Chris Nelson 2020

8-19
6-20
2-21
11-21
6-22
7-23
11-23

Organ p-3/4

Psalm 12

Lord, whose love in humble service

Interlude

In F (v.1)

ALL

4, You are the one

Chris Nelson 2023

Handwritten musical notation for the first system. The treble staff contains a sequence of notes: G4, A4, B4, C5, B4, A4, G4, F4, E4, D4. The bass staff contains a sequence of notes: C3, D3, E3, F3, G3, A3, B3, C4, D4, E4. There are several chords indicated by numbers 10, 11, and 12.

8-19
6-20
2-21
11-21
7-22
3-23
11-23

Organ p. 4/4

Handwritten musical notation for the second system. The treble staff continues the melody with notes: D4, C4, B3, A3, G3, F3, E3, D3, C3, B2, A2, G2. The bass staff continues the accompaniment with notes: C3, D3, E3, F3, G3, A3, B3, C4, D4, E4, F4, G4, A4, B4, C5. Chords are marked with numbers 10, 11, 12, and 13.

Handwritten musical notation for the third system. The treble staff has a 'Coda' section starting at measure 4, with notes: G4, A4, B4, C5, B4, A4, G4, F4, E4, D4. The bass staff has notes: C3, D3, E3, F3, G3, A3, B3, C4, D4, E4, F4, G4, A4, B4, C5. Chords are marked with numbers 10, 11, 12, and 13.

Psalms 12

Two empty musical staves (treble and bass) for the fourth system.

Chris Nelson 2023

Two empty musical staves (treble and bass) for the fifth system.