

18 From out of the top
Ezekiel 17

3-21
8-22

18 Chris Nelson 2018 Chris Nelson 2018

18

W solo Information

1. From out of the top, the lead-er

of a ced-ar,

will I take and plant a sprig

on a loft-y el-e-va-tion

in the na-tion,

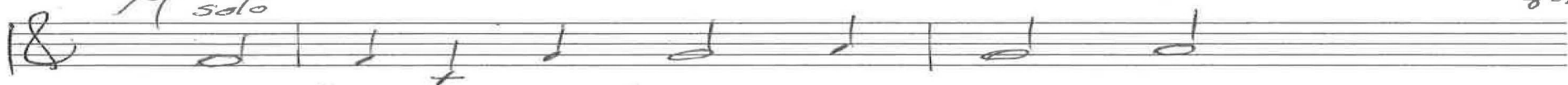
lo-ca-les where I like to dig.

p. 1/3 Ezekiel 17
Chris Nelson 2018

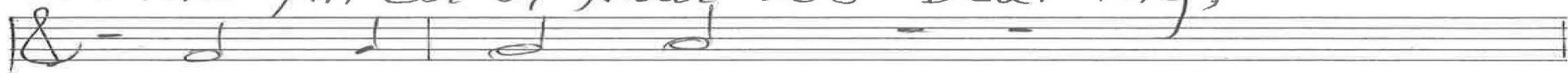
18

3-21
8-22

M solo



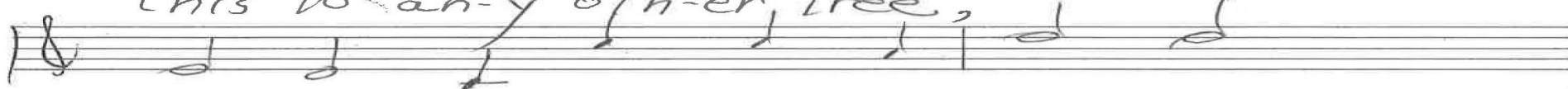
2. The fin-est of fruit it's bear-ing,



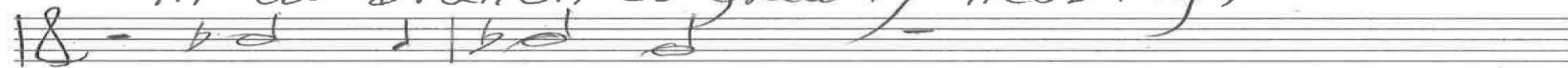
no com-par-ing



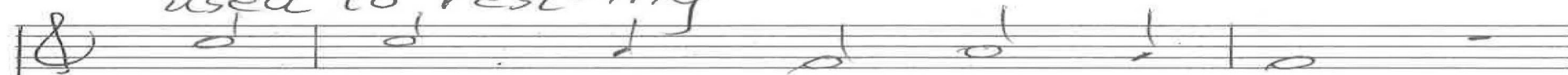
this to any oth-er tree,



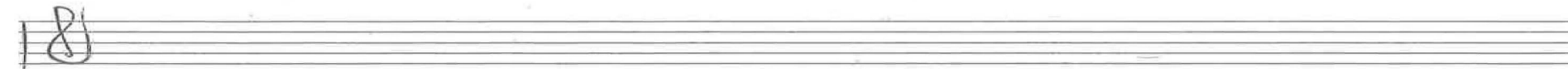
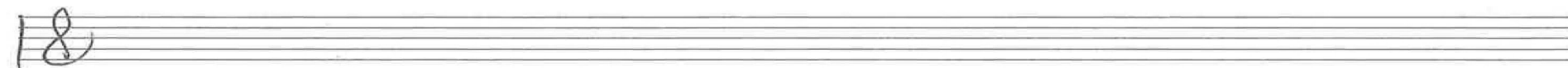
in its branch-es glad-ly nest-ing,



used to rest-ing



in shade, where my birds would be.



p. 2/3 Ezekiel 17 Chris Nelson 2018

18

3-21
8-22

W ALL

3. The trees of the field, dis-cern-ing,

will be learn-ing

I'm the Lord who speaks and does.

In their dram-a in-ter-ven-ing,

Some I'm green-ing,

and some make I dry what was.

Coda

p. 3/3 Ezekiel 17
 Chris Nelson 2018

Gt. Intonation (phr. 4) 1. From out of the top

man

whole tone

In G; Geneva 61

12-19
3-21
12-21
8-22
4-23
12-23

Organ p. 1/3

M swa ↓

Gt 2.

Fzekiel 17

The finest of fruit

In F

Chris Nelson: 2018

There in God's Garden

WALL ^{8va} ↑

3. The trees of the field

12-19
3-21
12-21
8-22
4-23
12-23

In d, v. 2 inverted

Hymn

Coda

In g v. 1

Organ p. 2/3

Ezekiel 17

Chris Nelson 2018

Handwritten musical notation for the first system. The top staff is in treble clef and contains a melodic line with notes and rests. The bottom staff is in bass clef and contains chords and accompaniment. The system is divided into four measures.

12-19
 3-21
 12-21
 8-22
 4-23
 12-23

Organ p. 3/3

Handwritten musical notation for the second system. The top staff is in treble clef and the bottom staff is in bass clef. Both staves are mostly empty, with only a few notes and rests at the beginning of the first measure.

Ezekiel 17

Handwritten musical notation for the third system. The top staff is in treble clef and the bottom staff is in bass clef. Both staves are empty.

Chris Nelson 2018

Handwritten musical notation for the fourth system. The top staff is in treble clef and the bottom staff is in bass clef. Both staves are empty.

Handwritten musical notation for the fifth system. The top staff is in treble clef and the bottom staff is in bass clef. Both staves are empty.