

With anthems, you heavens
Psalm 148

8-19
3-21
8-22

Chris Nelson 2018 Chris Nelson 2018

1. With an-thems, you heav-ens, you heights,

and eve-ry an-gel-host that fights,

you plan-ets as bright as the stars,

you wa-ters in your res-er-voirs,

rous-ing the Lord, whose named is fet-ed,

at whose com-mand were they cre-at-ed,

by eve-ry law that grace sur-rounds,

all ranked with-in their fav-orite bounds:

p-1/2 Psalm 148
Chris Nelson 2018

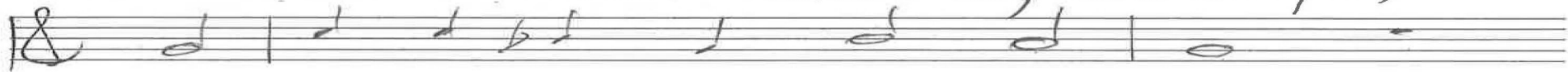
18

Interlude

8-19
3-21
8-22



2. He-ve-a-than churning the deeps,



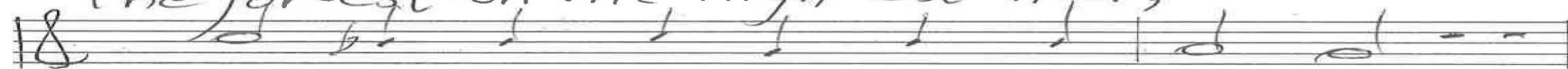
the bird a-bove, the snake that creeps,



the weath-er o-beyed with a will,



the for-est on the high-est hill,



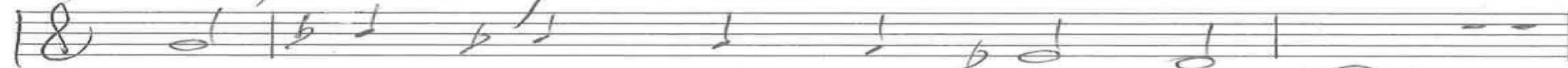
kings with their scepters right-ly reign-ing,



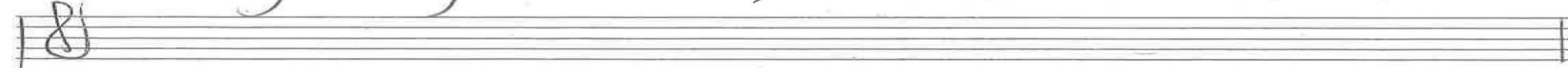
saints whose re-mem-brance we're main-tain-ing,



faith-ful to for-tunes that are due



the young and old, and child-ren too!



Coda

p 2/2

Psalm 148

Chris Nelson 2018

Intonation
Gt

6-19
12-19
3-21
MS
11-21
9-22
7-23
12-23

We all believe in one true God In c

Organ p. 1/3

Psalms 148

Chris Nelson: 2018

(last 3 phrases Gn. 148)
(meter)

Interlude

Chris Nelson: 2018

(melody on 148!)

6-19
12-19
3-21
12-21
8-22
4-23
12-23

Leviathan

→

In c, Geneva 148

Organ p. 2/3
Psalm 148
Chris Nelson 2018

Handwritten musical score for the first system. The treble clef staff contains a melodic line with notes and rests, including the word "Coda". The bass clef staff contains chords with various accidentals and fingering numbers (4, 5) written below. The system is divided into four measures.

6-19
12-19
3-21
12-21
8-22
4-23
12-23

Handwritten musical score for the second system. The treble clef staff continues the melodic line. The bass clef staff continues the chordal accompaniment. The system is divided into four measures.

Handwritten musical score for the third system. The treble clef staff continues the melodic line. The bass clef staff continues the chordal accompaniment. The system is divided into four measures.

Empty musical staves for the fourth system, consisting of a treble clef staff and a bass clef staff.

Empty musical staves for the fifth system, consisting of a treble clef staff and a bass clef staff.

Organ p. 3/3
Psalm 148
Chris Nelson 2018