

18 O God, for benign assistance
Psalm 61

11-19
3-21
8-22

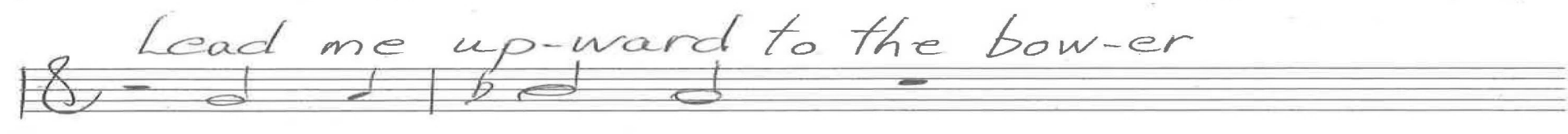
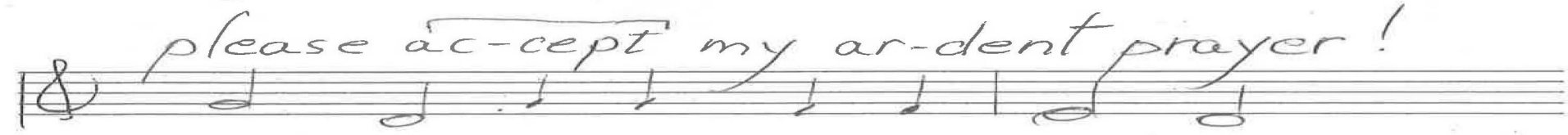
18 Chris Nelson 2018

Chris Nelson 2018



W solo

Intonation



p. 1/3

Psalm 61

Chris Nelson 2018

18

11-19
3-21
8-22

M solo

2. I'd board in your tent for shel-ter

from the swel-ter,

in the awn-ing by your wings.

With the pledg-es I'm a-vow-ing

you're al-low-ing

be-lief in Al-migh-ty things.

18

18

P. 2/3
Psalm 61
Chris Nelson 2018

18

11-19
3-21
8-22

W ALL

3. Keep bless-ing the King ap-point-ed

you've a-point-ed,

may the Branch con-tin-ue on,

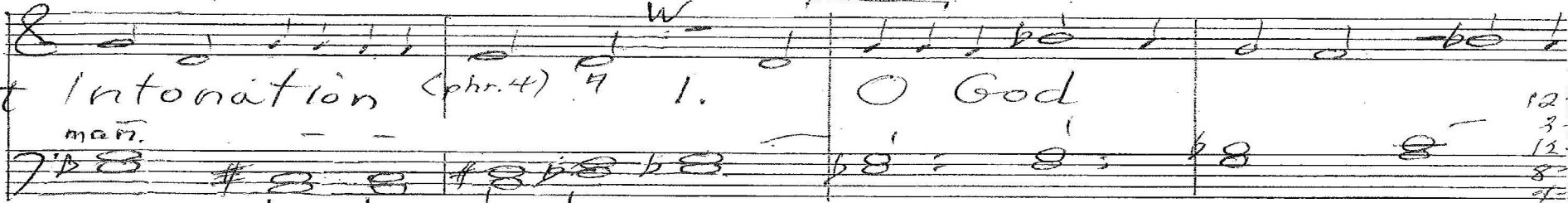
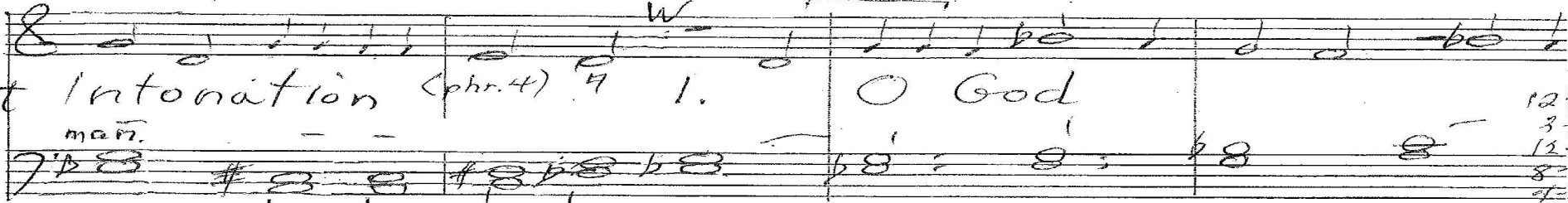
while en-throned with best of phrases,

reg-al prais-es

from psal-ter and an-ti-phon!

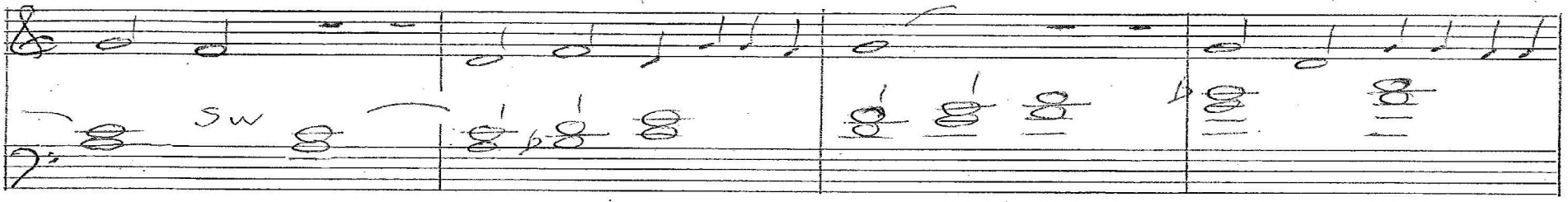
Coda


p. 3/3
Psalm 61
Chris Nelson 2018

8
 Ct Intonation (phr. 4) 7 1. O God
 mar.
 7:  
 2 whole tone

12-19
 3-21
 12-21
 8-22
 4-23
 12-23

Organ p. 1/3

In G; Geneva 61
 5w


M 8 vol ↓
 Ct-2.


Psalm 61

In F
 I'd board 4


Chris Nelson: 2018

There in God's Garden


W ALL Sva ↑

3 Keep blessing

12-19
3-21
12-21
8-22
4-23
12-23

In d, v. 2 inverted

Hymn

pd

Organ p. 2/3

Coda

In g v. 1

Psalm 61
Chris Nelson 2018

Handwritten musical notation for the first system. The top staff is in treble clef and contains a sequence of notes: G4, A4, B4, C5, B4, A4, G4, F4, E4, D4. The bottom staff is in bass clef and contains chords: G4, A4, B4; G4, A4, B4; G4, A4, B4; G4, A4, B4; G4, A4, B4; G4, A4, B4; G4, A4, B4; G4, A4, B4. There are also some handwritten markings like '4' and 'b' above the notes.

12 19
3 21
12 21
8 22
4 23
12-23

Organ p. 3/3
Psalm 61

Handwritten musical notation for the second system. The top staff is in treble clef and contains a few notes: G4, A4. The bottom staff is in bass clef and contains a few notes: G4, A4, B4. The rest of the system is blank.

Blank musical notation for the third system, consisting of two empty staves (treble and bass clef).

Blank musical notation for the fourth system, consisting of two empty staves (treble and bass clef).

Blank musical notation for the fifth system, consisting of two empty staves (treble and bass clef).

Chris Nelson 2018