

With praises, O God

Psalm 65

11-19  
3-21  
8-22

Chris Nelson 2018 Chris Nelson 2018

ALL # Intonation

1, With praises, O God, are we drum-ming,

pledg-ing our souls; de-vout.

All flesh with its sins will be com-ing,

sins that are blot-ted out.

Glad is the one that you're in-vit-ing

to courts for which we yearn.

Fill us with youth-ful-ness ex-cit-ing,

with good-ness and con-cern.

p. 1/3 Psalm 65 Chris Nelson 2018

18

11-19  
3-21  
8-22

2. Your mar-vels put gleam in sal-va-tion,

hope of the dis-tant isles,

Your pow-er grips all of cre-a-tion,

realms with their riv-er Niles,

Calm down the sea and deal a warn-ing

to eve-ry-thing on earth,

gates of the eve-ning and the morn-ing

pro-claim-ing what you're worth,

p. 2/3 Psalm 65 Chris Nelson 2018

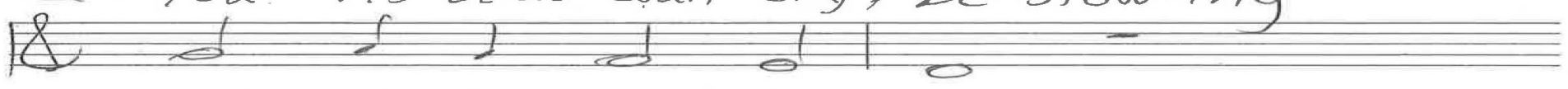
18

11-19  
3-21  
8-22

ALL



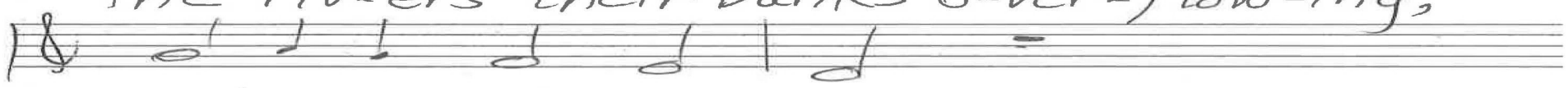
3. You vis-it our coun-try, be-stow-ing



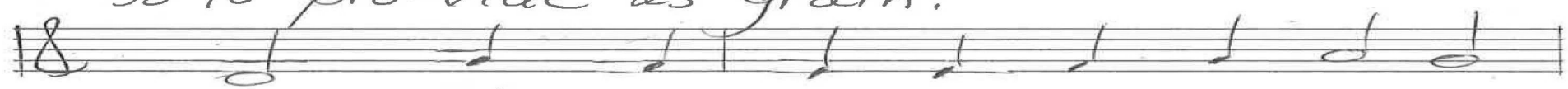
mists of the gen-tle rain,



the riv-ers their banks o-ver-flow-ing,



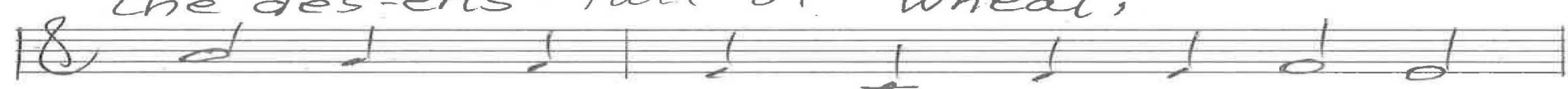
so to pro-vide us grain.



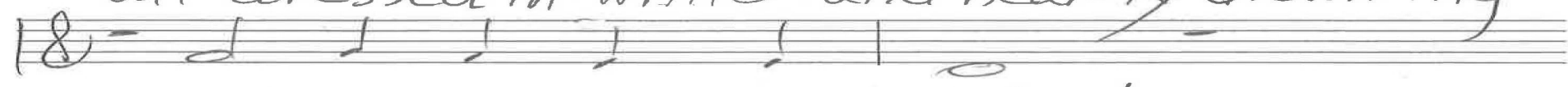
Hills with their gar-lands are you crown-ing



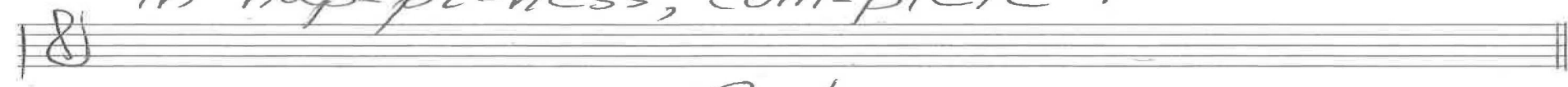
the des-erts full of wheat,



all dressed in white and near-ly drown-ing



in hap-pi-ness, com-plete!



Coda

p-3/3 Psalm 65 Chris Nelson 2018

8 Intonation 1. All With praises

Sw Gt

12-19  
3-21  
12-21  
8-22  
11-23  
12-23

Inversion of intonation

In G

I was there to hear your borming cry

In D, v. 1 inverted

4 Your marvels

Organ p. 1/3  
Psalm 65  
Chris Nelson 2018

12-19  
3-21  
12-21  
8-22  
4-23  
12-23

Organ p. 2/3

ALL

3. You visit our country

In d, Generan 65

Psalm 65

Chris Nelson 2023

Handwritten musical notation for the first system. The top staff is in treble clef and contains a melodic line. The bottom staff is in bass clef and contains chords. The word "Coda" is written above the final measure of the bass staff.

12-19  
3-21  
12-21  
8-22  
4-23  
12-23

Organ P. 3/3

Handwritten musical notation for the second system. The top staff is in treble clef and contains a melodic line. The bottom staff is in bass clef and contains chords.

Psalms 65

Empty musical notation for the third system, consisting of two staves (treble and bass clef).

Chris Nelson 2018

Empty musical notation for the fourth system, consisting of two staves (treble and bass clef).

Empty musical notation for the fifth system, consisting of two staves (treble and bass clef).