

As those who shun God
Psalm 112

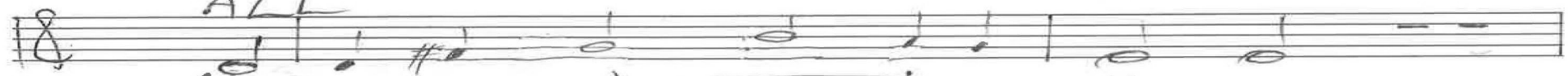
f-20
11-20
9-22

Chris Nelson 2017 Chris Nelson 2017
Series 4

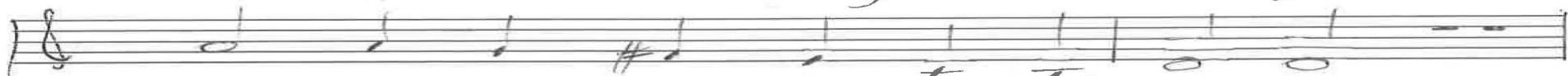


Intonation

ALT



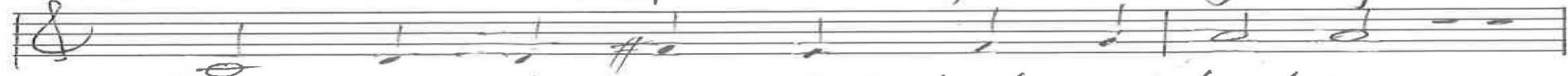
1. As those who shun God go on liv-ing,



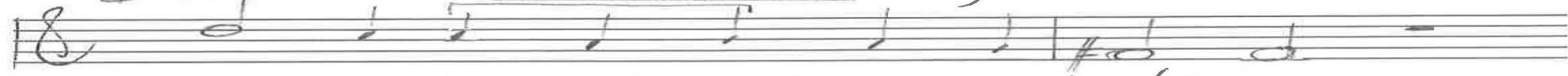
Blessed those who go right on for-giv-ing,



Cream of the crop that keeps on rang-ing,



Dealt their de-scend-ants high-er sta-tion,



Each in the end with ju-bi-la-tion,



Fan-tas-tic fight-ers, quite un-chang-ing:



P. 1/4 Psalm 112 Chris Nelson 2017

18

1-20
11-20
4-22

2. Glows bright-er the dark when they've ris-en,

Hap-py when vis-it-ing a pris-on,

Ill when they're irked by what they're lend-ing,

Joined to the joy-ful, vol-un-teer-ing,

Kept in the know and per-se-ver-ing,

Leave tell-ing leg-a-cies un-end-ing.

p. 2/4 Psalm 112 Chris Nelson 2017

18

1-20
11-20
4-22

3. Most like-ly they stand at at-ten-tion,

News trying to scat-ter ap-pre-hen-sion

On their o-bed-i-ence and re-li-ance.

Put in their place the lame ex-cu-s-es,

Quick, how they quell the cruel a-bu-s-es

Re-ceived from re-pro-bates and gi-ants.

p. 3/4 Psalm 112 Chris Nelson 2017

18

J-20
11-20
9-22

ALL

4. Such per-sons are young in re-la-tion

To car-ing not for re-pu-ta-tion,

Us-ing the ug-ly as a lev-er.

Vain, an-y voic-es can't be prais-ing,

We count on Word for all our phras-ing,

Yet hymns are yes-ter-day's en-deav-or.

P. 4/4 Psalm 112 Chris Nelson 2017

Intonation
Gt

ALL

1. As those

In G Series 4

12-19
11-20
8-21
4-22
10-22
7-23
2-24

2. Glows brighter

In C

Organ P. 1/3
Psalm 112
Chris Nelson 2017

Handwritten musical notation for the first system, featuring treble and bass staves with notes and chords.

12-19
 20
 21
 22
 23
 24

Handwritten musical notation for the second system, including the instruction "3. Most likely" and a "W" above the staff.

Handwritten musical notation for the third system, showing treble and bass staves with notes and chords.

Handwritten musical notation for the fourth system, featuring complex chordal structures in the bass staff.

Handwritten musical notation for the fifth system, including the instruction "4. Such persons" and the word "giants".

Organ P. 2/3

Psalm 112

Chris Nelson 2024

Handwritten musical score for the first system. The treble clef staff contains a melody with a key signature of one flat and a 7/4 time signature. The bass staff contains dense chordal accompaniment with various accidentals.

12-19
11-20
8-21
4-22
12-22
7-23
2-24

Handwritten musical score for the second system, continuing the melody and accompaniment from the first system.

Handwritten musical score for the third system, including the word "Coda" above the treble staff.

Handwritten musical score for the fourth system, featuring performance instructions "sw grad" and "sw ↓".

Empty musical staves for the fifth system, consisting of a treble clef staff and a bass clef staff.

Organ P. 3/3
Psalm 112
Chris Nelson 2017