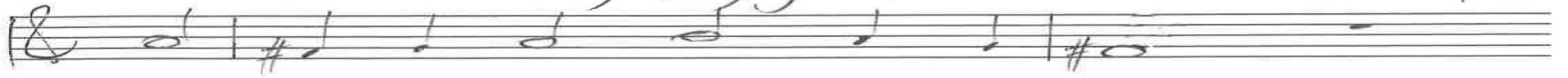


1. I cheered the day they gave us dates

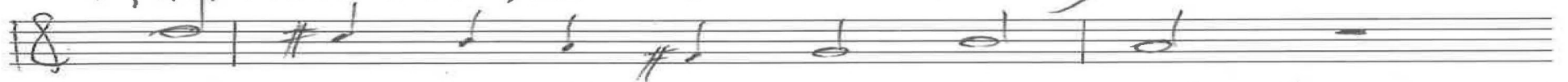
1-20
11-20
4-22



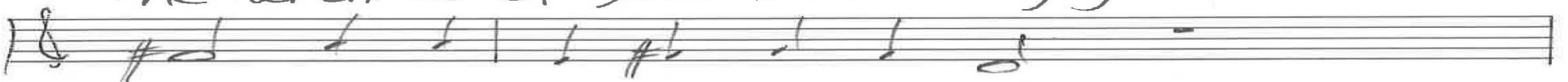
for when our long march would be-gin.



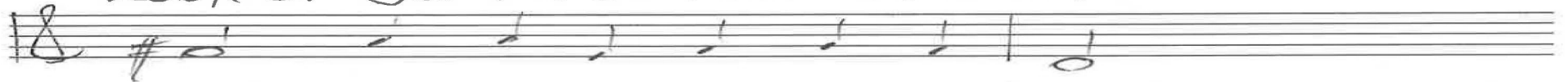
And now our feet stand half-way in



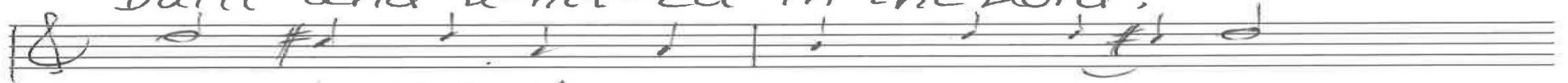
the arch-es of your beck-oning gates!



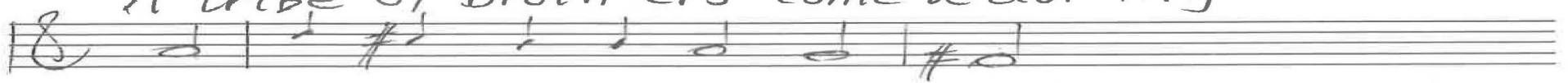
Look at Je-ru-sa-lem re-stored,



built and u-nit-ed in the Lord!



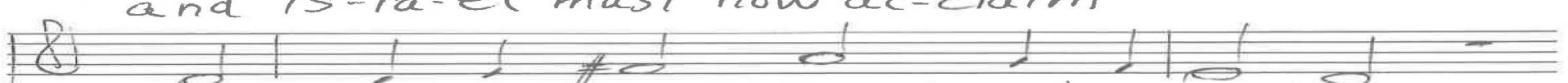
A tribe of broth-ers come a-dor-ing



to bless a ho-ly be-ing's name,



and Is-ra-el must now ac-claim



King Da-vid's true Branch, not ig-nor-ing.

P. 1/2
Psalm 122
Chris Nelson 2017

ALL
4/4

2. Lift up your brim-ming cha-lic-es!

1-20
11-20
4-22

May op-u-lence live in your halls,

in tents that hang close to your walls!

Good health with-in your pa-tac-es!

Friends, dear-est friends, a bright de-but,

pray for Je-ru-sa-lem, the new!

'May peace be with you, all ex-cel-ling.'

Since God is here at this ad-dress,

I'm pray-ing for your hap-pi-ness,

your home in this House for your dwell-ing.

Organ p. 2/2 Psalm 122 Chris Nelson 2017

Intonation
Gt

ALL
1. I cheered

pizz

In D, G#m 122

12-19
11-20
8-21
4-22
18-23
2-24

pizz

ALL
2. Lift up
Sw 400

In B^b 40

Organ p. 1/2
Psalm 122
Chris Nelson 2017

Handwritten musical notation for the first system. Treble clef staff contains a melody. Bass clef staff contains chords. Key signature: one flat (B-flat). Measure numbers 12-19 are indicated on the right.

12-19
11-20
8-21
4-22
10-22
7-23
2-24

Handwritten musical notation for the second system. Treble clef staff contains a melody. Bass clef staff contains chords. The word "Gt." is written above the first measure of the bass staff. Key signature: one flat (B-flat).

Handwritten musical notation for the third system. Treble clef staff contains a melody. Bass clef staff contains chords. Key signature: one flat (B-flat).

Handwritten musical notation for the fourth system. Treble clef staff contains a melody. Bass clef staff contains chords. The word "Swb" is written above the bass staff in the fourth measure. Key signature: one flat (B-flat).

Handwritten musical notation for the fifth system. Treble clef staff contains a melody. Bass clef staff contains chords. The system concludes with a double bar line. Key signature: one flat (B-flat).

Organ p. 2/2 Psalm 122 Chris Nelson 2017