

Let God arise
Chris Nelson 2017 Psalm 68 Chris Nelson 2017

6-19
11-19
11-20
8-21
4-22

ALL

1. O God, a-rise and scat-ter those

who side with your re-bel-lious foes

whose ty-ran-nies are flee-ing,

as smoke is driv-en by your ire,

as wax is melt-ed in a fire,

whose end is what we're see-ing.

But let your peo-ple sing for joy

a song which wor-ship-pers em-ploy

your myst'ries to un-rav-el,

P. 1/2 Psalm 68 Chris Nelson 2017



6-19
11-19
11-20
8-21
4-22

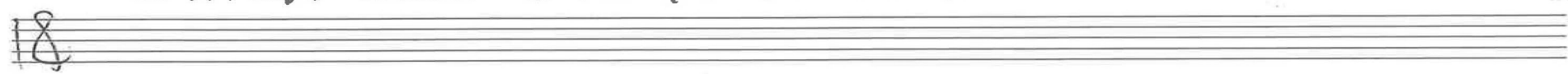
and smooth a sur-face hard-ly tried



a Rid-er of the Clouds could ride,



which hum-ble folk could trav-el.



2. For you to forge a-head and show



your fam-i-ly the way to go,



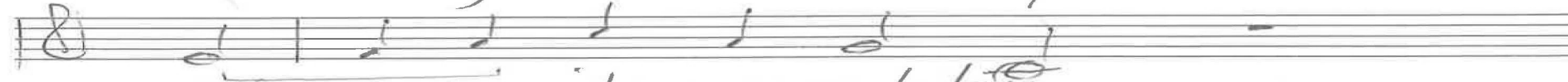
the in-jured ones to ral-ly,



make straight the high-way and or-dain



that ev-ery cliff be-come a plain



and ev-ery ridge a val-ley.

P. 2/12 Psalm 68 Chris Nelson 2017

6-19
11-20
8-21
4-22
2-24

In-stinctive-ly, they on-ward wend
 and like a shep-herd you intend
 to watch their ev-ery func-tion,
 who led them in their in-fan-cy,
 the pris-oner to pros-per-i-ty,
 at Mo-se-s' in-junc-tion.

ALL
 3.0 God, the God of Is-ra-el,
 when march-ing out you did it well
 with cloud and fi-ery pil-lar,

P. 3/12
Psalm 68
Chris Nelson 2017

6-19
11-20
8-21
4-22

with cau-tion as your peo-ple walked,
with maj-es-ty when Si-nai rocked,
of vows, the great ful-fil-ler.
You rained the man-na down at length,
you gave your mul-ti-tude the strength
to do what needs dis-patch-ing,
the hon-ey with the flow-ing milk
you prom-ised those of ev-ery ilk
your good-ness ever match-ing.

P 4/12 Psalm 68 Chris Nelson 2017

6-19
11-20
8-21
4-22
7-23

P. 5/12

Psalms 68 Chris Nelson 2017

w

4. You gave your mes-sen-gers the news,
the tid-ings that would cir-cum-fuse
your folk with ex-pec-ta-tion:
Your e-ne-mies who trusted might
are reel-ing on, with kings in flight,
the edge of dev-as-ta-tion.
At home the wom-en shared the loot,
a du-ty they would ex-e-cute,
though some would still be gap-ing.

Those others in the folds of ease
 were watch-ing how the moun-tains freeze
 and keep them from es-cap-ing.

6-19
 11-20
 8-21
 7-22
 7-23

ALL

5. That peak of Bash-an! I re-fuse.
 a moun-tain I could hard-ly use,
 who jeal-ous-y is tell-ing!

Have you a pow-er which de-nies
 a neigh-bor-hood I'd rath-er prize
 as such a ho-ly dwell-ing?

P. 6/12 Psalm 68 Chris Nelson 2017

6-19
10-19
11-20
8-21
4-22

P. 7/12

Psalm 68

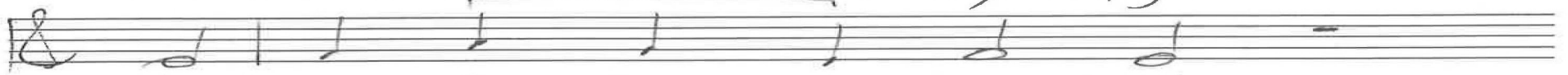
Chris Nelson 2017



With thou-sands from a form-er site



our Lord as-cend-ed ev-ery height



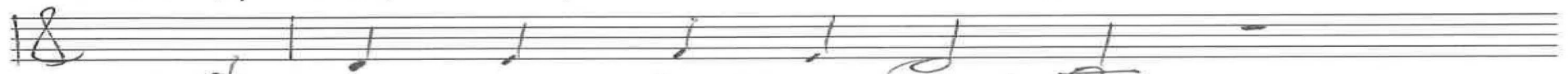
in heav-enly trans-por-ta-tion,



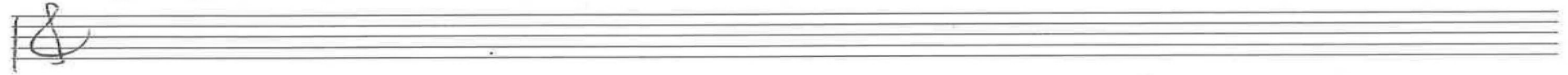
with cap-tives in your roy-al train,



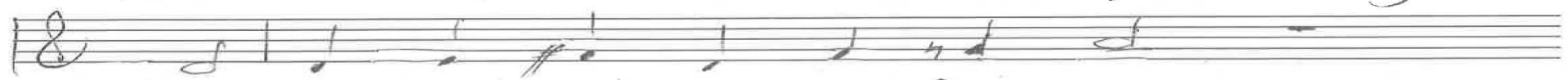
with reb-el-folk whose deeds re-main



a cause of trib-u-la-tion.



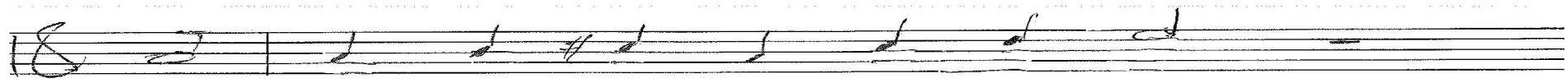
O. To God, this God of ours, be-longs



the way to right such aw-ful wrongs,



our bur-dens glad-ly bear-ing,

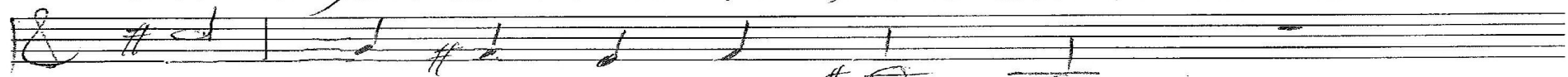


to knock your en-e-mies a-bout

6-19
11-20
8-21
4-22
7-23



when you ar-rive to 'find them out',



the quit-ty ev-er snar-ing,



to bring them back when they re-treat,



to make them bathe their wear-y feet



in flu-ids of per-di-tion,



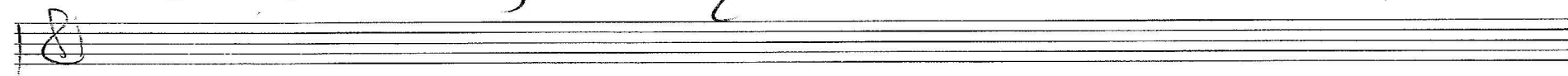
To let their lap-ping dogs ap-proach



who-ev-er tried to come and poach,

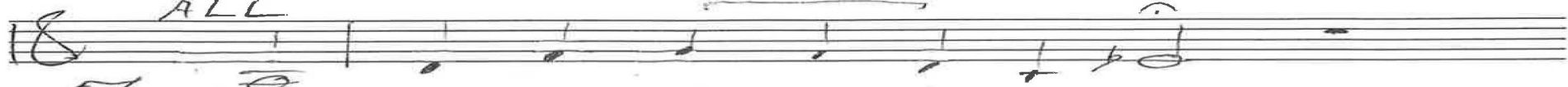


ob-tain-ing ac-qui-si-tion.

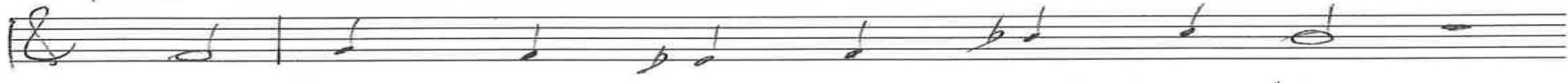


p. 8/12 Psalm 68 Chris Nelson 2017

ALL



Your car-a-l-cade is now in view,



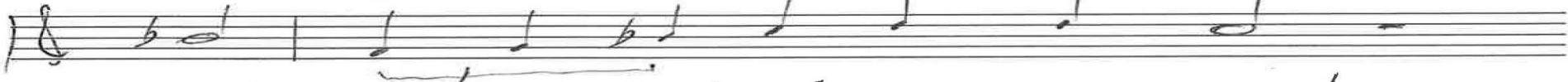
my king's pro-ces-sion march-ing to



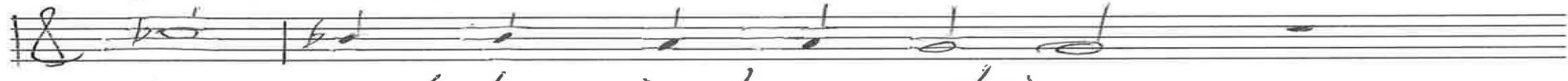
the buzz of cel-e-bra-tion,



as maid-ens start to beat the drum



and can-tors in be-tween suc-cumb



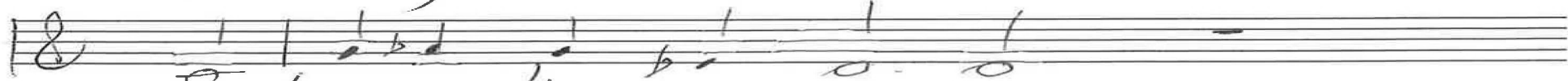
to priest-ly in-ton-a-tion,



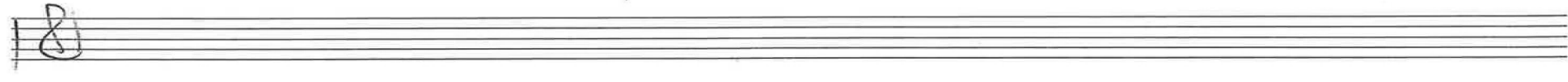
with tam-bour-ines, the harp and lyre,



with ev-ery brass and voc-al choir



as Is-ra-el's pa-rad-ed,



6-19
11-20
8-21
4-22
2-24

p. 9/2 Psalm 68 Chris Nelson 2017

whose princ-es fol-low Ben-ja-min,
as far a-way as Zeb-u-lun,
in splen-did robes, bro-cad-ed.

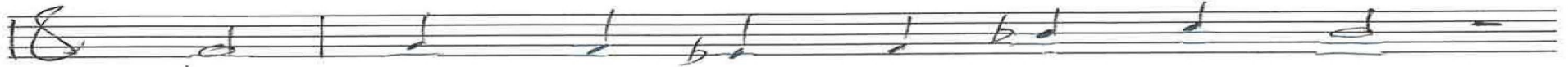
W. Give or-ders and be-gin to laugh,
re-veal your pow-er in the staff
that led us to sal-va-tion.

From high a-bove Je-ru-sa-lem
take stock of ev-ery di-a-dem
that thwarts our lib-er-a-tion.

6-19
11-20
8-21
4-22
2-14

P. 10/12
Psalm 68
Chris Nelson 2017

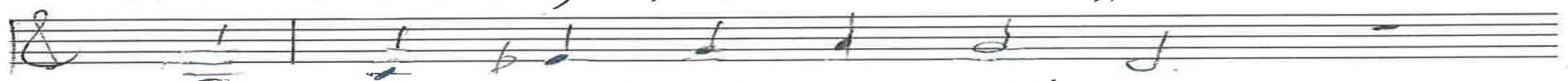
6-19
11-20
8-21
4-22
2-24



That beast a-mong the reeds re-buke,



that coun-try of the riv-er fluke



where pyr-a-mids are rift-ed.



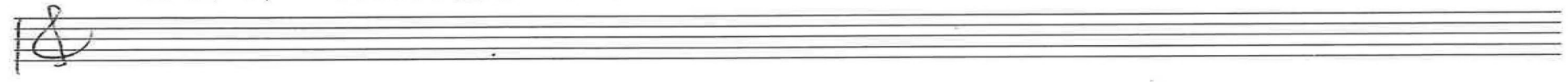
As birds that love to scar-enge, let



them pay their gold and sil-ver debt,



with hands in won-der lift-ed!



9. Your king-doms of the earth, a-loud,

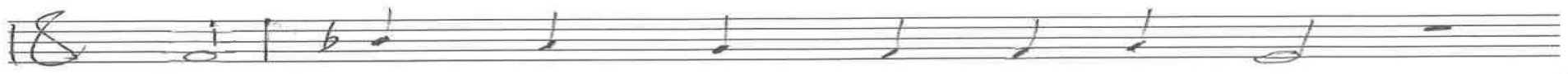


Sing out for you who ride the cloud



their prais-es by the ho-ur!

p. 11/2 Psalm 68 Chris Nelson 2017

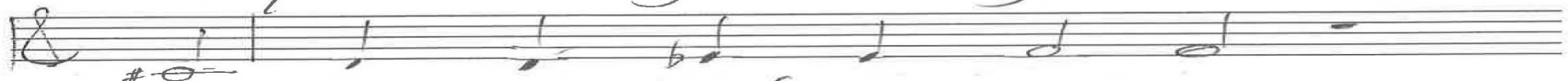


The flash and thun-der of your shout

6-19
11-20
8-21
4-22



are quite e-nough to bring a-bout



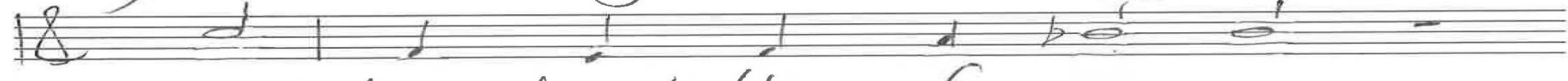
en-dorse-ment of your pow-er.



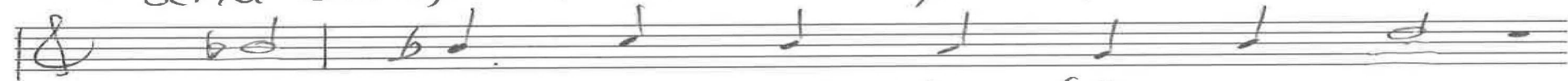
Pro-vide us ev-ery means to live,



your her-i-tage a bless-ing give,



and shep-herd them for-ev-er.



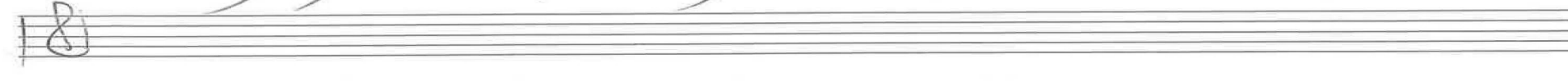
With glor-ies that the skies ex-press,



to wor-ship you with great fi-nesse



they faith-ful-ly en-deav-or.



p. 12/12 Psalm 68 Chris Nelson 2017

Intonation

1. O God arise

19
20
21
22
10-22
7-23
2-24

In F (v. 3 inverted)

Organ p. 1/8

Psalms 68

Chris Nelson 2020

In d

2. For you to forget

ahead

10-19
6-20
11-20
8-21
4-22
10-22
7-23
2-24

Organ p. 7/8

Veni (v. 8)

Psalms 68

ALL 1.

O God

Chris Nelson 2020

Veni Creator Spiritus In B^b

2.

10-19
6-20
11-20
5-21
4-22
15-22
7-23
2-24

Organ p. $\frac{3}{8}$

Gn 68

Psalms 68

You gave your messengers In D

Gn 68

Chris Nelson 2020

10-19
6-20
11-20
8-21
4-22
10-22
7-23
2-24

Organ p. 4/8

In C, Genevan 68

with thousands from the

pizz.
former site our Lord ascended

Psalm 68

Chris Nelson 2020

Gn 68

M -

To God

In D (v. 4)

Gn 68

10-19

6-20

11-20

7-21

4-22

10-22

7-23

2-24

Organ p. 5/8

Gn 68

express.

Psalms 68

ALL In B^b (v. 3)

Your cavalcade

SW 4/4

Chris Nelson 2020

myth king's procession

whole tone pizz.

10-19
6-20
11-20
8-21
4-22
10-22
7-23
2-24

Organ p. 6/8

with tambourines

Gt.

Psalm 68

W Vene
O, Give orders

In d

Chris Nelson 2020

(v. 2)
Vene

Handwritten musical notation for the first system. The top staff is in treble clef and contains a melodic line with eighth and sixteenth notes. The bottom staff is in bass clef and contains a harmonic accompaniment with whole and half notes. The word "veni" is written above the staff. A vertical line is placed after the second measure.

10-19
6-20
11-20
8-21
4-22
10-22
7-23
2-24

Organ p. 7/8

Handwritten musical notation for the second system, continuing the piece. It features a treble clef staff with a melodic line and a bass clef staff with a harmonic accompaniment. The word "veni" is written above the staff.

Handwritten musical notation for the third system. The top staff is in treble clef and contains a melodic line. The bottom staff is in bass clef and contains a complex harmonic accompaniment with many accidentals. The word "ALL" is written above the staff. A vertical line is placed after the second measure.

Psalms 68

Your kingdoms of the earth

In F (v. 1)

Handwritten musical notation for the fourth system. The top staff is in treble clef and contains a melodic line. The bottom staff is in bass clef and contains a complex harmonic accompaniment with many accidentals.

Chris Nelson 2020

Handwritten musical notation for the fifth system. The top staff is in treble clef and contains a melodic line. The bottom staff is in bass clef and contains a complex harmonic accompaniment with many accidentals.

Handwritten musical notation for the first system. The treble clef staff contains a melody with notes and rests. The bass clef staff contains chords with various accidentals (flats and sharps). A measure rest is present in the first measure of the treble staff.

10-19
6-20
11-20
8-21
4-22
10-22
7-23
2-24

Organ p. 8/8

Handwritten musical notation for the second system. Similar to the first system, it features a treble clef staff with a melody and a bass clef staff with chords. The bass staff shows more complex chordal textures with many notes.

inverted Gt

Handwritten musical notation for the third system. The treble clef staff has a few notes and rests, with the word "Sw" written above it. The bass clef staff contains chords. A measure rest is present in the first measure of the bass staff.

Palm 68

Empty musical staves for the fourth system, consisting of a treble clef staff and a bass clef staff.

Chris Nelson 2020

Empty musical staves for the fifth system, consisting of a treble clef staff and a bass clef staff.