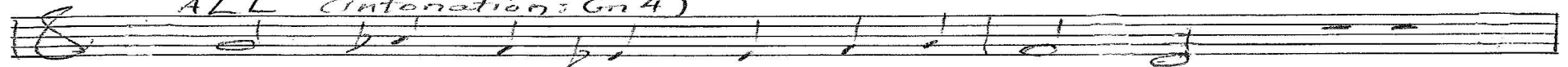
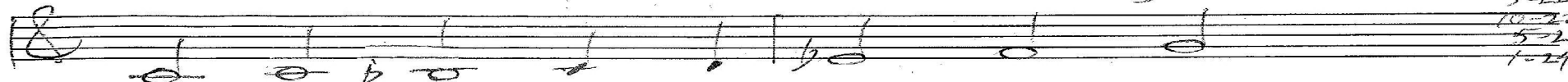


ALL (Intonation: Gn 4)



1. Faith in the Lord am I de-clar-ing,

9-19
10-20
3-22
10-22
5-23
1-24



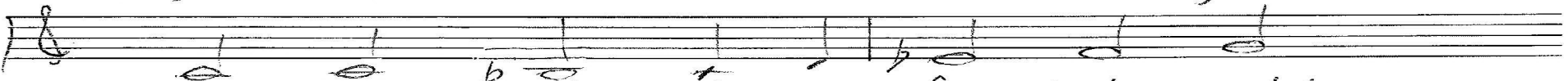
God who's fill-ing my soul with light,



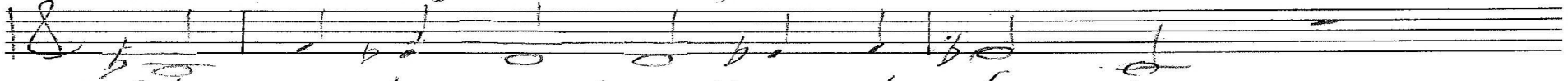
who's fea-tured my role in pre-par-ing



joys all the fu-ture will be shar-ing,



great things done by a fa-bled might.



This great-ness to all am I show-ing,



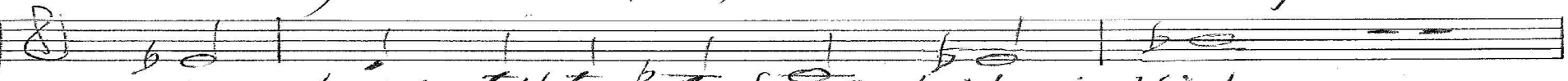
with ser-a-phim's in-ces-sant cry.



All gen-er-a-tions will be know-ing



mer-cy that keeps for-ev-er flow-ing



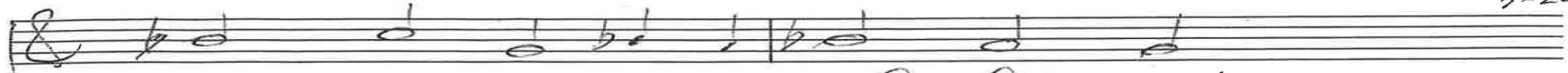
a-round the throne of God Most High.

p. 1/2 Luke 1 Chris Nelson 2017



2. Look at the ful-ness of cre-a-tion,

9-19
10-20
3-22



strength that com-forts the fear-ful heart,



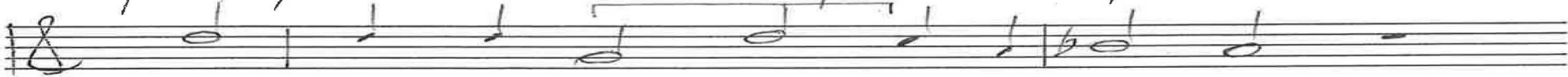
with po-ten-tates pulled from their sta-tion



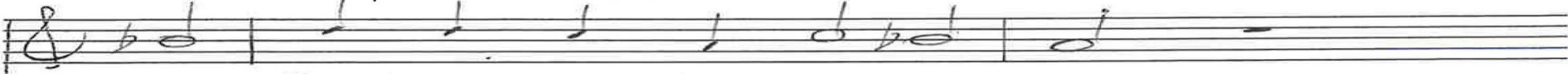
down to the lev-el of star-va-tion,



pau-pers raised to a place a-part,



with help that lets all be ob-serv-ant,



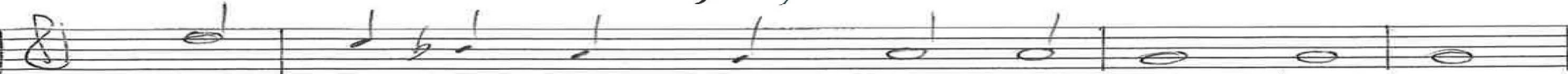
with faith-ful-ness to un-der-score



ties bind-ing Is-ra-el whose ferv-ent



wish was to al-ways find the serv-ant



in A-bra-ham, for-ev-er-more.

p. 2/2

Luke | Chris Nelson 2017

ALL

Intonation $\frac{7}{4}$ Gn4

1. Faith in the Lord and

10-19
1-20
10-20
6-21
3-22
10-22
5-23
1-24

In Eb

declaring

Organ p. 1/3 | like 1 Chris Nelson 2017

2. Look at the fulness of creation

10-19
1-20
10-20
6-21
3-22
10-22
5-23
1-24

In 9, Geneva 4

Organ P. 2/3
Luke 1
Chris Nelson 2017

The image displays a handwritten musical score for organ, consisting of five systems of staves. Each system includes a treble clef staff with a melodic line and a grand staff (treble and bass clefs) with complex chordal accompaniment. The notation is dense, with many notes and accidentals. The first system is titled "2. Look at the fulness of creation" and includes a list of measure numbers on the right. The second system is titled "In 9, Geneva 4". The score is written in a clear, legible hand, and the overall layout is organized and professional.

Handwritten musical score for the first system. The top staff is in treble clef and contains several notes with a slur over the first two. A downward arrow labeled "Sim" points to the first note. A bracket under the first two notes is labeled "4". The second staff is in bass clef and contains several chords with notes. A slur is over the first two chords, and a downward arrow labeled "Sim" points to the first chord. A bracket under the first two chords is labeled "4". The word "rit." is written above the second measure. The system ends with a double bar line.

10-19
 1-20
 10-20
 6-21
 3-22
 10-22
 5-23
 1-24

Empty musical staff for the second system.

Empty musical staff for the third system, including treble and bass clefs.

Empty musical staff for the fourth system, including treble and bass clefs.

Empty musical staff for the fifth system, including treble and bass clefs.

Organ p. 3/3
 Like! Chris Nelson 2017