

Your refuge

Chris Nelson 2017 Psalm 91 Chris Nelson 2017

6-19
1-20
11-20
4-22
7-23

Musical staff with notes and rests.

Intonation
ALL

Musical staff with notes and rests.

1. Your re-fuge is the Lord Most High,

Musical staff with notes and rests.

Al-might-y God, your dwell-ing,

Musical staff with notes and rests.

whose awn-ing is the place to lie,

Musical staff with notes and rests.

with ad-vers-ar-ies yell-ing,

Musical staff with notes and rests.

who screens you from the sav-age things

Musical staff with notes and rests.

that drag-ons go ac-cru - ing,

Musical staff with notes and rests.

puts you be-neath the feath-ered wings

Musical staff with notes and rests.

of a-vi-an re-new-ing.

p. 1/3 Psalm 91 Chris Nelson 2017

18

6-19
1-20
11-20
4-22

ALL



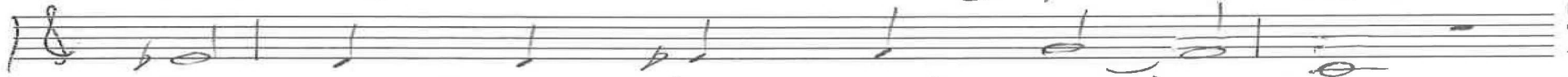
3. I'll give my an-gels full com-mands



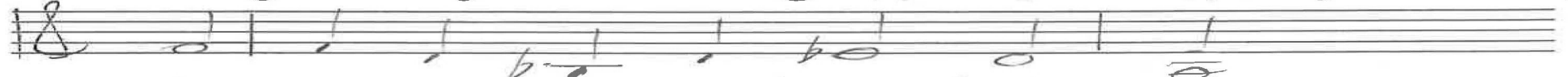
to halt the stones they're throw-ing,



in case the ad-der hurts your hands,



to guard you where you're go-ing.



I res-cue who ac-know-ledge me,



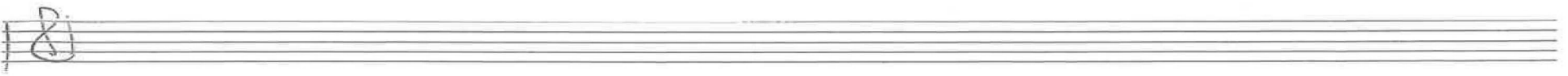
I an-swer in-vo-ca-tion,



Life do I of-fer, full and free,



and dram-a-tize sal-va-tion.



p. 3/3 Psalm 91 Chris Nelson 2017

Handwritten musical notation for the first system. The top staff is a vocal line in G major, starting with a treble clef and a key signature of one sharp (F#). The bottom staff is a piano accompaniment line in G major, starting with a bass clef and a key signature of one sharp (F#). Chord diagrams are written above the piano staff, including a G major triad (G-B-D), a D major triad (D-F#-A), and a B major triad (B-D-F#). The piano part features a steady eighth-note accompaniment.

10-19
11-20
18-21
4-22
10-22
7-23
2-24

the plague that stalks you down

Handwritten musical notation for the second system. The vocal line continues with the lyrics "the plague that stalks you down". The piano accompaniment continues with the same eighth-note pattern. A "W" is written above the piano staff, possibly indicating a whole note or a specific chord.

Handwritten musical notation for the third system. The vocal line includes the lyrics "ALL 3. I will give". The piano accompaniment continues. A "3." is written above the piano staff, indicating a triplet.

Handwritten musical notation for the fourth system. The piano accompaniment continues with the eighth-note pattern. The vocal line is not present in this system.

Handwritten musical notation for the fifth system. The piano accompaniment concludes with a final chord. The vocal line is not present in this system.

Organ P. 2/3
Psalm 91
Chris Nelson 2024

Handwritten musical notation for the first system, featuring a treble clef and a bass clef. The notation includes notes, rests, and dynamic markings such as "express." and "4".

10-19
11-20
8-21
4-22
10-22
7-23
2-24

Handwritten musical notation for the second system, including a treble clef and a bass clef. It contains notes, rests, and various chordal structures.

Handwritten musical notation for the third system, featuring a treble clef and a bass clef. It includes notes, rests, and the instruction "subito".

Empty musical staves for the fourth system, consisting of a treble clef and a bass clef.

Empty musical staves for the fifth system, consisting of a treble clef and a bass clef.

Organ P. 3/3
Psalm 91
Chris Nelson 2017