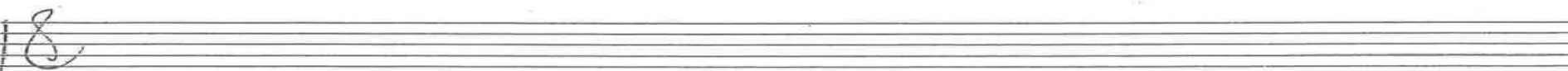
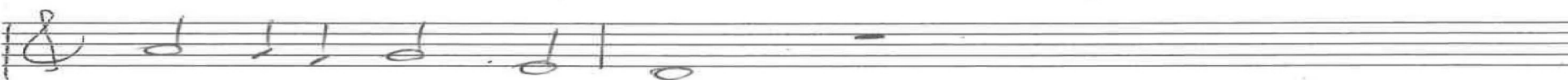
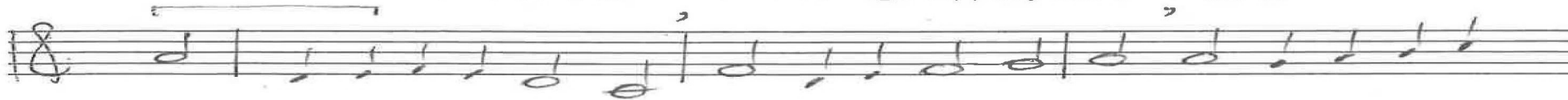


I knew from the beginning
Jeremiah 1

1-20
11-20
8-25
4-22

Chris Nelson 2017 Chris Nelson 2017

Introduction Genevan 130



p. 1/3 Jeremiah 1 Chris Nelson 2017



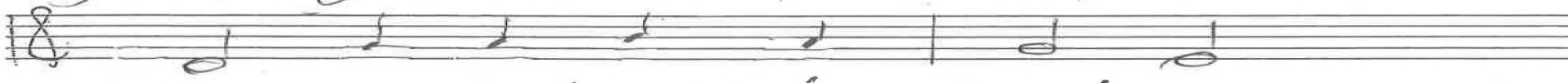
1-20
11-20
8-21
4-22



1. "I knew from the be-gin-ning



you and your time of birth,



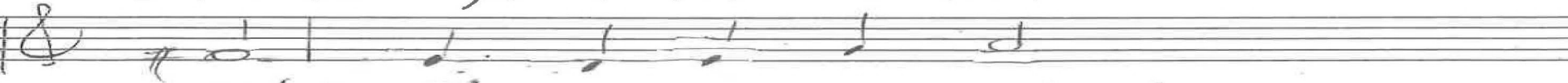
I knew that we'd be win-ning



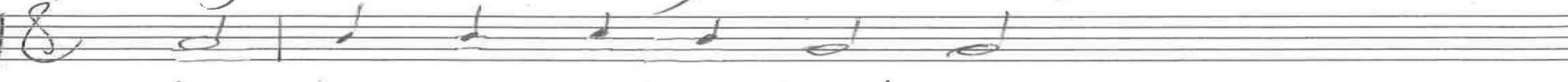
Strug-gles of great-est worth.



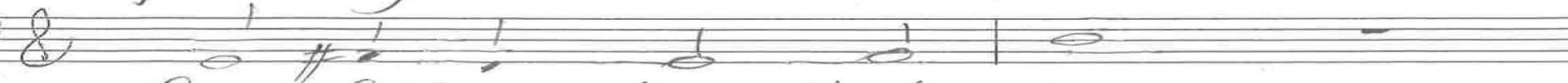
Stif-fle fears that a na-tion



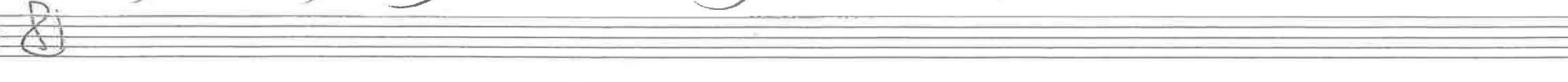
might balk at my com-mand,



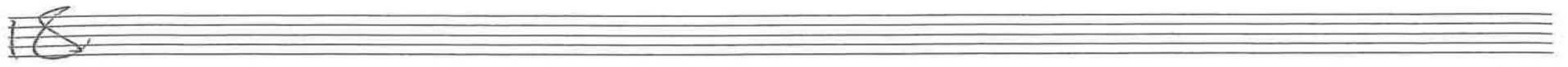
for I'm your in-su-la-tion,



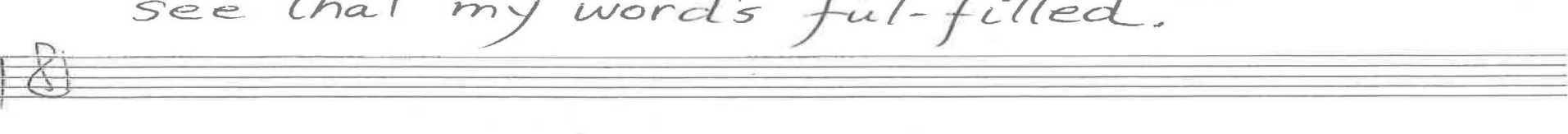
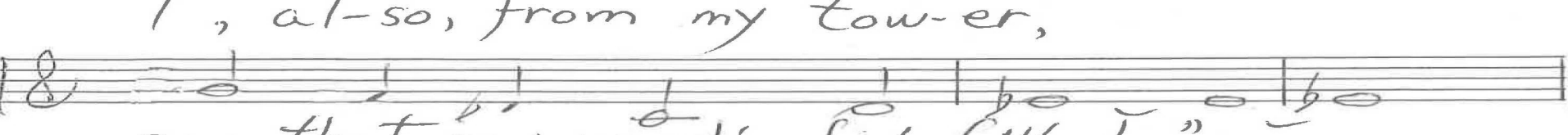
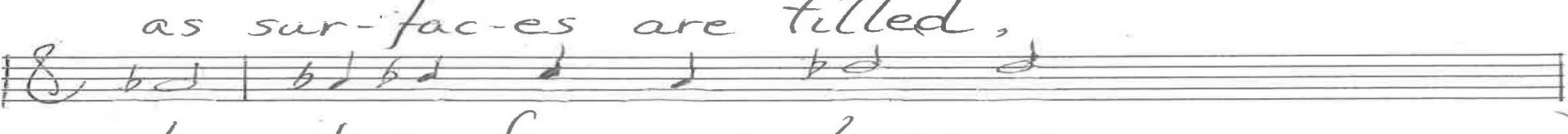
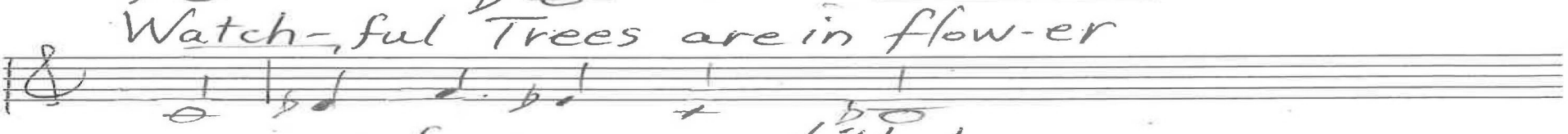
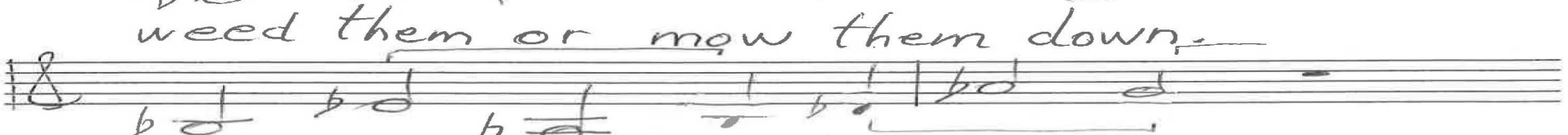
food for your strength to stand.



p. 43 Jeremiah 1 Chris Nelson 2017



1-20
11-20
8-21
4-22
10-22



P. 3/3 Jeremiah 1
Chris Nelson 2017

Handwritten musical notation for the first system, including treble and bass clefs, notes, and chords. Includes the instruction "ALL" and the tempo marking "2. In you".

9-19
11-20
8-21
7-22
7-23
2-24

In Ab

Handwritten musical notation for the second system, featuring treble and bass clefs, notes, and chords.

Handwritten musical notation for the third system, including the instruction "express." and treble/bass clefs with notes and chords.

watchful trees are in flower

Handwritten musical notation for the fourth system, including treble and bass clefs, notes, and chords. Includes the instruction "Sw 8va d".

Empty musical staves for the fifth system, consisting of two blank treble clef staves and two blank bass clef staves.

Organ p. 2/2 Jeremiah 1
Chris Nelson 2017