

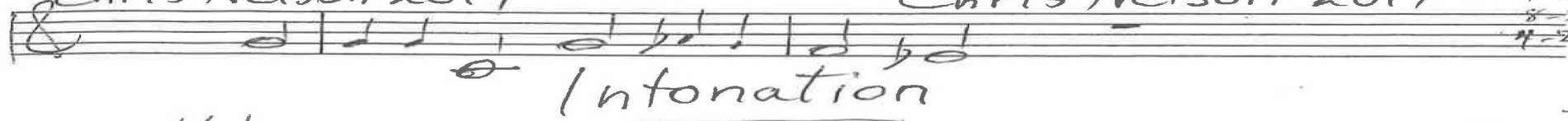
As Jesus' last days  
Luke 9

Chris Nelson 2017

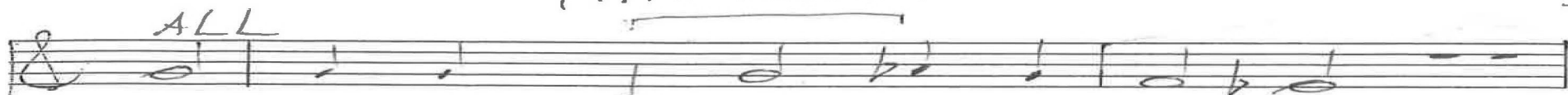
Chris Nelson 2017

9-19  
11-20  
4-21  
8-21  
4-22

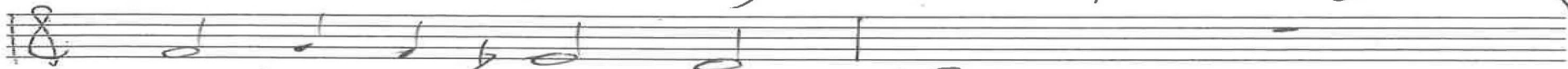
Intonation

Musical notation for Intonation, consisting of a single staff with a treble clef and a key signature of one flat (Bb). The notes are: G4, A4, Bb4, C5, Bb4, A4, G4.

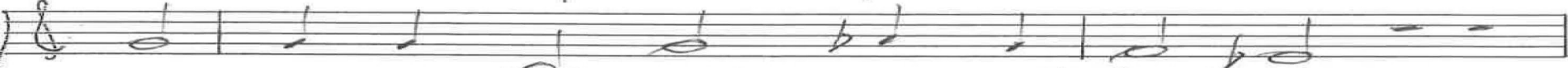
ALL

Musical notation for ALL, consisting of a single staff with a treble clef and a key signature of one flat (Bb). The notes are: G4, A4, Bb4, C5, Bb4, A4, G4.

1. As Je-sus' last days were im-pend-ing,

Musical notation for the first line of the first phrase, consisting of a single staff with a treble clef and a key signature of one flat (Bb). The notes are: G4, A4, Bb4, C5, Bb4, A4, G4.

set was the steady-fast face,

Musical notation for the second line of the first phrase, consisting of a single staff with a treble clef and a key signature of one flat (Bb). The notes are: G4, A4, Bb4, C5, Bb4, A4, G4.


to follow that path, some of-fend-ing,

Musical notation for the third line of the first phrase, consisting of a single staff with a treble clef and a key signature of one flat (Bb). The notes are: G4, A4, Bb4, C5, Bb4, A4, G4.

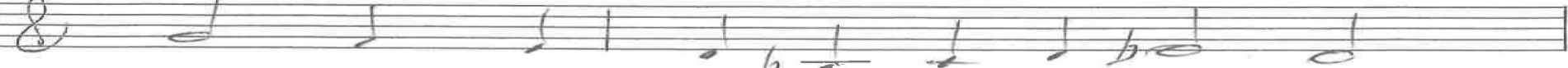
on to the Ho-ly Place.

Musical notation for the first line of the second phrase, consisting of a single staff with a treble clef and a key signature of one flat (Bb). The notes are: G4, A4, Bb4, C5, Bb4, A4, G4.

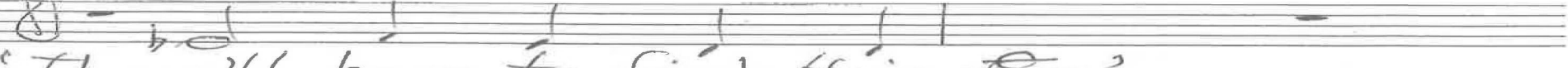
Thus would they make their pre-pa-ra-tions

Musical notation for the second line of the second phrase, consisting of a single staff with a treble clef and a key signature of one flat (Bb). The notes are: G4, A4, Bb4, C5, Bb4, A4, G4.

to woo the out-er zone,

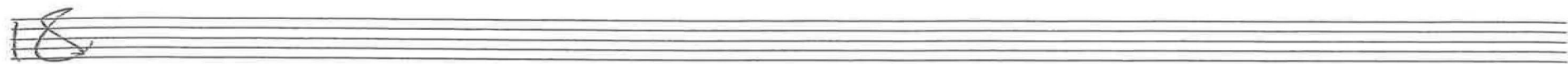
Musical notation for the third line of the second phrase, consisting of a single staff with a treble clef and a key signature of one flat (Bb). The notes are: G4, A4, Bb4, C5, Bb4, A4, G4.

but there were no ac-com-mo-da-tions,

Musical notation for the fourth line of the second phrase, consisting of a single staff with a treble clef and a key signature of one flat (Bb). The notes are: G4, A4, Bb4, C5, Bb4, A4, G4.

"They'll have to find their own."

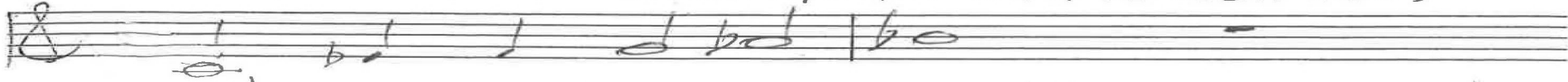
p. 15 Luke 9 Chris Nelson 2017



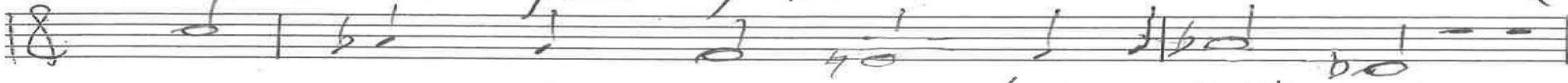
9-19  
11-20  
4-21  
8-21  
4-22



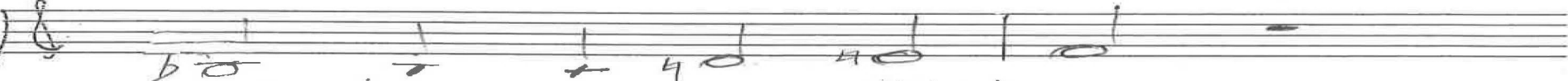
2. 'Let's star-tle these folks with a won-der,



call down a fier-y blaze!'



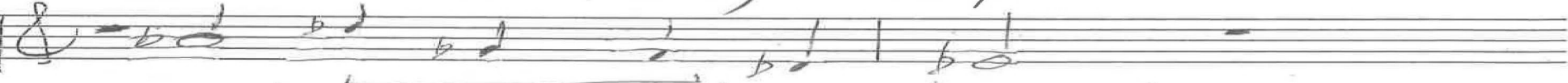
These Sons who made noise like the Thun-der



should have per-ceived their craze.



Jes-us their fol-ly re-pri-mand-ed,



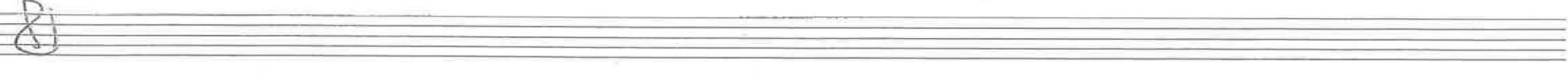
"You know not what you do.



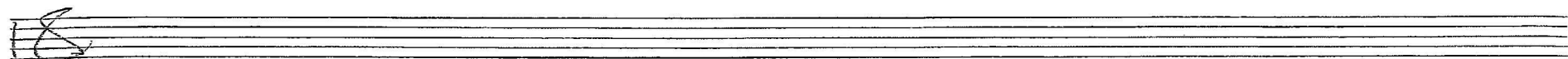
Look, I'm ar-riv-ing emp-ty-hand-ed,



to ask and not to sue."



p. 25 Luke 9  
Chris Nelson 2017



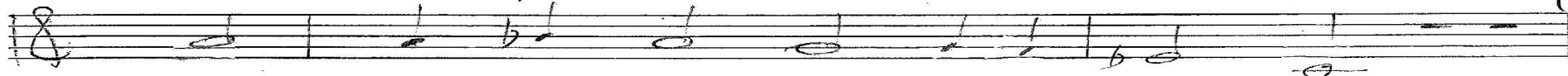
9-19  
11-20  
4-21  
8-21  
4-22  
7-23



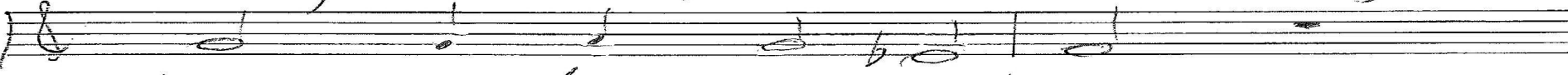
3. At that they went on, never slowing,



met one up-on the road



who'd fol-low them, not ev-en know-ing



sites where their group a-bode.



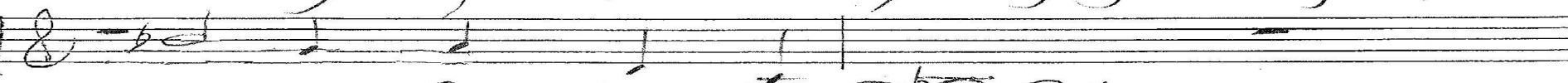
"Birds in the trees are ev-er nest-ing,



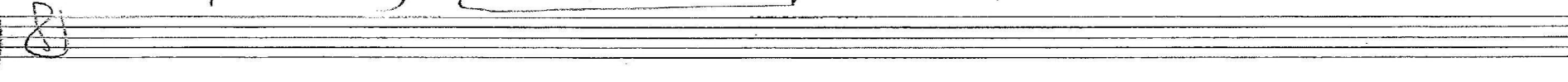
the fox-es have be-gun.



Would you pre-fer to try sug-gest-ing



a place for Man the Son?"



p. 3/5 Luke 9 Chris Nelson 2017

18

9-19  
11-20  
4-21  
8-21  
4-22

M  
Musical staff with treble clef, 4/4 time signature, and a melody line starting with a sharp sign.

4. Dis-ci-ples were called, yet an-oth-er.

Musical staff with treble clef, 4/4 time signature, and a melody line.

'Lord, let me have con-sent

Musical staff with treble clef, 4/4 time signature, and a melody line.

to bur-y my dad (or my moth-er),

Musical staff with treble clef, 4/4 time signature, and a melody line.

irked at the way I went.

Musical staff with treble clef, 4/4 time signature, and a melody line.

"Leave them who can-not be at-ten-tive

Musical staff with treble clef, 4/4 time signature, and a melody line.

to de-al with their dead.

Musical staff with treble clef, 4/4 time signature, and a melody line.

Show to the ones with-out in-cen-tive

Musical staff with treble clef, 4/4 time signature, and a melody line.

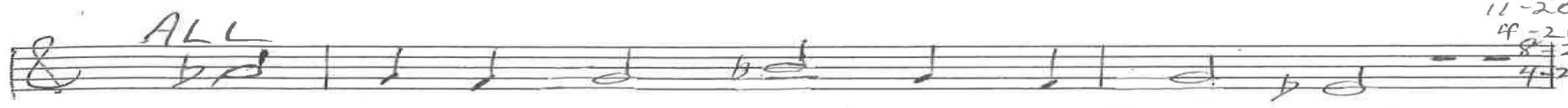
the way of life instead."

Musical staff with treble clef, 4/4 time signature, and a melody line.

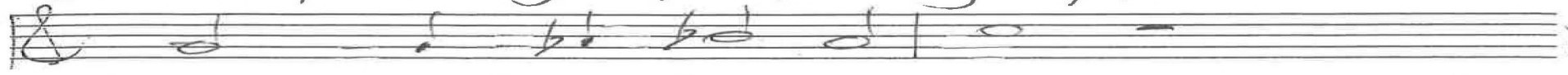
P. 4/5 Luke 9 Chris Nelson 2017



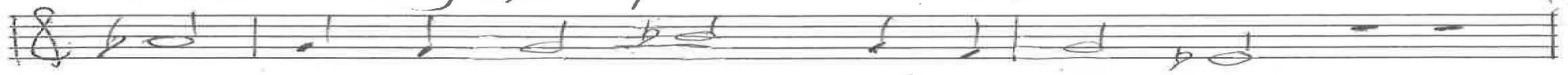
9-19  
11-20  
4-21  
8-21  
4-22



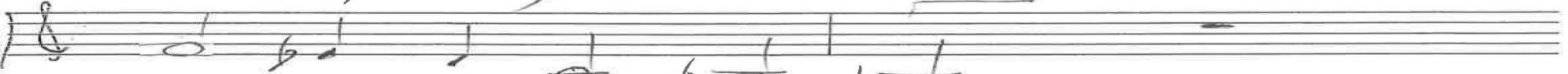
5. 'I'll fol-low you, sir, through af-flic-tion!



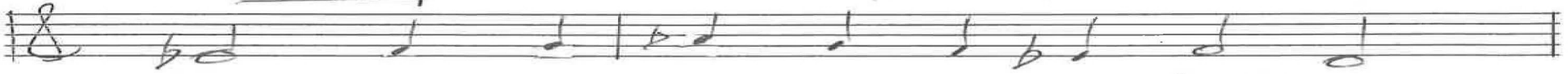
First though, be-fore I roam,



I'd of-fer my short val-e-dic-tion



all those I left at home.'



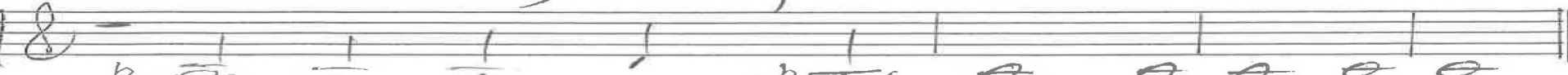
"But, when the hand of eye-be-hold-ers



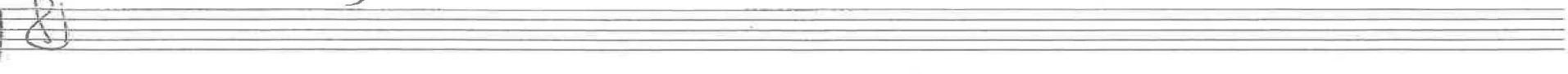
is laid up-on the plough,



back-look-ing o-ver for-ward shoul-ders



the King-dom won't al-low.



p.5/5 Luke 9 Chris Nelson 2017

Intonation  
Gt

ALL  
1. As Jesus 9-19  
11-20  
4-21  
8-21  
4-22  
10-22  
7-23  
9-23  
2-24

In c, Geneva 72

Organ p. 1/4  
Luke 9  
Chris Nelson 2017

w/ In f

2. Let's startle

Handwritten musical notation for the first system, featuring a treble and bass staff with notes and chords.

9-19  
11-20  
4-21  
2-21  
7-22  
7-23  
9-23  
2-24

Handwritten musical notation for the second system, featuring a treble and bass staff with notes and chords.

Handwritten musical notation for the third system, featuring a treble and bass staff with notes and chords.

ALL  
3. At that

In B<sup>b</sup>

Handwritten musical notation for the fourth system, featuring a treble and bass staff with notes and chords.

Handwritten musical notation for the fifth system, featuring a treble and bass staff with notes and chords.

Lord Jesus, think on me

Organ p. 2/4 Luke 9 Chris Nelson 2017

Handwritten musical notation on a grand staff (treble and bass clefs). The melody is written in the treble clef, and the accompaniment is in the bass clef. The key signature has one flat (B-flat). The time signature is 8/4. The melody consists of quarter and eighth notes. The accompaniment features chords with accidentals.

9-19  
11-20  
4-21  
8-21  
4-22  
10-22  
7-23  
9-23  
2-24

Handwritten musical notation on a grand staff. The melody is in the treble clef, and the accompaniment is in the bass clef. The key signature has one flat. The time signature is 8/4. The melody includes a measure with a fermata. The word "Disciples" is written in the treble clef. The accompaniment has chords with accidentals.

In b

Handwritten musical notation on a grand staff. The melody is in the treble clef, and the accompaniment is in the bass clef. The key signature has one flat. The time signature is 8/4. The melody consists of quarter and eighth notes. The accompaniment has chords with accidentals.

Handwritten musical notation on a grand staff. The melody is in the treble clef, and the accompaniment is in the bass clef. The key signature has one flat. The time signature is 8/4. The melody consists of quarter and eighth notes. The accompaniment has chords with accidentals.

In c

Handwritten musical notation on a grand staff. The melody is in the treble clef, and the accompaniment is in the bass clef. The key signature has one flat. The time signature is 8/4. The melody consists of quarter and eighth notes. The accompaniment has chords with accidentals. The text "ALL" and "5. I'll follow" is written in the treble clef.

Organ p. 3/4 Luke 9 Chris Nelson 2017



Handwritten musical score for Organ, p. 4/4, Luke 9. The score consists of five systems of two staves each (treble and bass clef). The first system includes a list of numbers on the right side: 9-19, 4-20, 4-21, 8-21, 4-22, 18-22, 7-23, 9-23, 2-24. The second system has a '4' below the bass staff. The third system has a '3' above the treble staff. The fourth system has a '2' above the treble staff and 'Gm72' and 'sw' in the bass staff. The fifth system is mostly empty with a few notes and a downward arrow in the bass staff.

Organ p. 4/4  
 Luke 9  
 Chris Nelson 2017