

This turbulence

Psalm 2

Chris Nelson 2017

Chris Nelson 2017

6-19
11-20
8-21
8-21
4-22

Musical notation for the first line, including a treble clef, a key signature of one sharp (F#), and a common time signature (C). The notes are: F#4, G4, A4, B4, C5, B4, A4, G4, F#4, E4, D4, C4.

Intonation

ALL

Musical notation for the second line, identical to the first line.

1. This tur-bu-lence that's ach-ing for your jolt!

Musical notation for the third line, identical to the first line.

This row a-mong the fools you dis-ap-point - ed!

Musical notation for the fourth line, identical to the first line.

The princ-es had been plot-ting their re-volt,

Musical notation for the fifth line, identical to the first line.

ris-ing a-gainst you, Lord, and your a-noint - ed,

Musical notation for the sixth line, identical to the first line.

'Let us in piec-es break their bonds a-san-der!

Musical notation for the seventh line, identical to the first line.

Let us un-tie those bind-ings of their yoke!'

Musical notation for the eighth line, identical to the first line.

See how your voice ad-dress-es them with thun-der

Musical notation for the ninth line, identical to the first line.

to make yourself heard when your laugh a-woke.

p. 1/3 Psalm 2 Chris Nelson 2017



6-19
11-20
4-21
8-21
4-22



2. When maj-es-ty ob-tains the up-per hand,



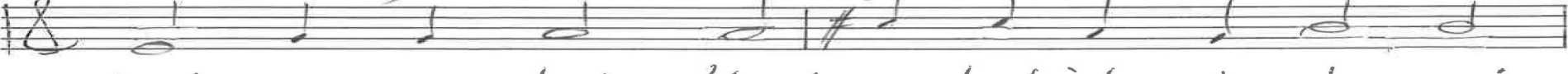
in mock-er-y you strike at them with pan - ic.



"My king on Li-on's moun-tain will com-mand,



put there by me and tru-ly mes-si-an - ic."



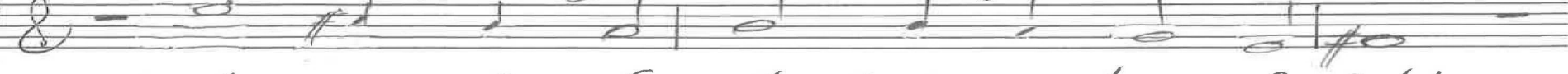
Let me pro-claim that word which you're de-cree-ing,



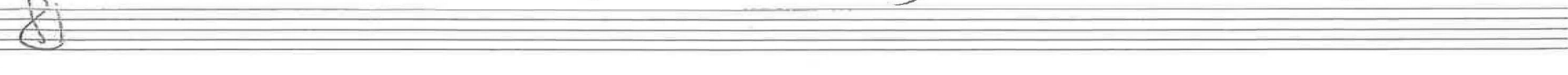
"We are a son and fath-er who u-nite."



Ask and I'll give you na-tions, guar-an-tee-ing



that mon-archs of earth see your show of might.



p. 2/3 Psalm 2 Chris Nelson 2017

18

6-19
11-20
4-21
8-21
-4-12

ALL



3. " You'll break them with a scep-ter and a rod



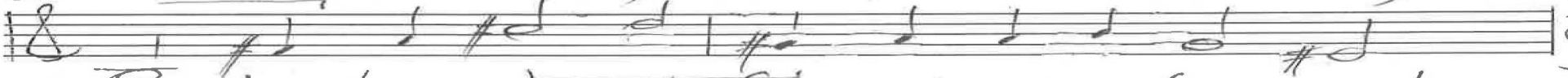
to shat-ter them like clay as would a pot - ter.



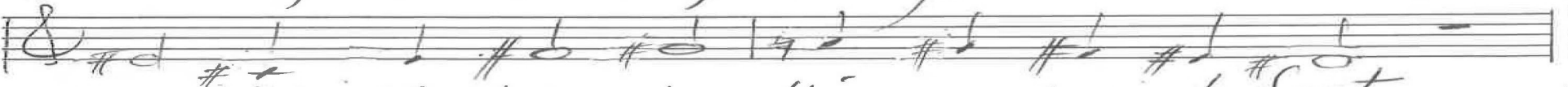
When ru-lers lack the sense of an-y god,



serv-ice is what they need and not the slaugh-ter,



learn-ing to serve with fear as your be-stow-ment,



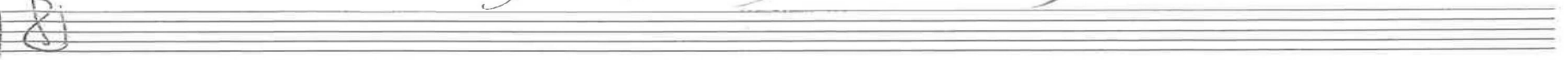
bend-ing the knee to kiss your roy-al feet,



lest they in-cur your an-ger in a mo-ment,



their shel-ter in you, at your mer-cy seat.



P. 3/3 Psalm 2 Chris Nelson 2017

Intonation

1. This turbulence

ALL

In F#

9-19
11-20
4-21
8-21
4-22
10-22
7-23
2-24

In D M

2. - Whig

Organ p. 1/3 Psalm 2 Chris Nelson 2017

majesty

pizz.

9-19
11-20
4-21
8-21
4-22
10-22
7-23
2-24

We are a son and father who unite

ALL In f# (v. 1)

3. You'll break them

Organ p. 2/3
Psalm 2
Chris Nelson 2017

9-19
11-20
4-21
8-21
7-22
7-22
7-23
2-24

Organ p. 3/3
Psalm 2
Chris Nelson 2017