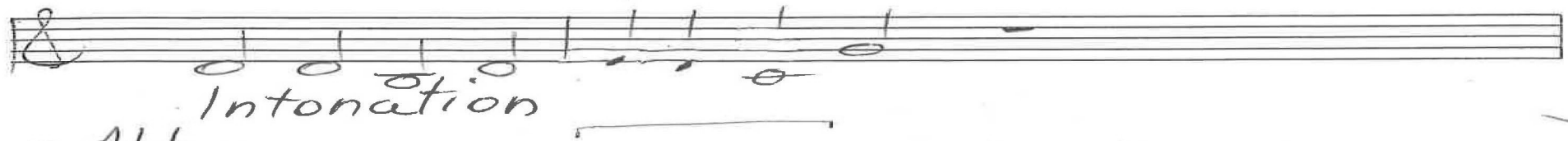


8 God is staking claims
Psalm 24

11-19
10-20
3-22
5-23

Chris Nelson 2017 Chris Nelson 2017

Intonation

Musical notation for intonation, consisting of a single staff with a treble clef and a common time signature. It features a series of notes: a half note G4, a quarter note A4, a quarter note B4, a quarter note C5, a quarter note B4, a quarter note A4, a quarter note G4, and a whole note F4.

ALL

Musical notation for the first line of lyrics, consisting of a single staff with a treble clef and a common time signature. It features a series of notes: a half note G4, a quarter note A4, a quarter note B4, a quarter note C5, a quarter note B4, a quarter note A4, a quarter note G4, and a whole note F4.

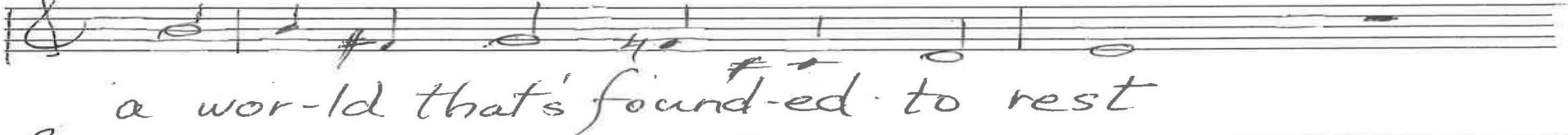
1. God is stak-ing claims up-on earth,
all she con-tains of good and worth,

Musical notation for the second line of lyrics, consisting of a single staff with a treble clef and a common time signature. It features a series of notes: a half note G4, a quarter note A4, a quarter note B4, a quarter note C5, a quarter note B4, a quarter note A4, a quarter note G4, and a whole note F4.

all who would make of her their dwell-ing,

Musical notation for the third line of lyrics, consisting of a single staff with a treble clef and a common time signature. It features a series of notes: a half note G4, a quarter note A4, a quarter note B4, a quarter note C5, a quarter note B4, a quarter note A4, a quarter note G4, and a whole note F4.

a wor-ld that's found-ed to rest

Musical notation for the fourth line of lyrics, consisting of a single staff with a treble clef and a common time signature. It features a series of notes: a half note G4, a quarter note A4, a quarter note B4, a quarter note C5, a quarter note B4, a quarter note A4, a quarter note G4, and a whole note F4.

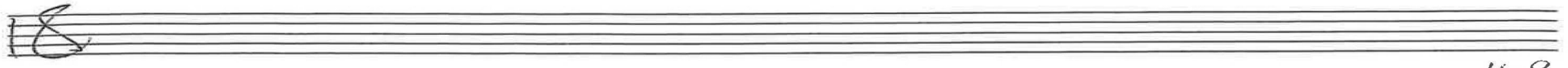
in com-fort on the o-cean crest,

Musical notation for the fifth line of lyrics, consisting of a single staff with a treble clef and a common time signature. It features a series of notes: a half note G4, a quarter note A4, a quarter note B4, a quarter note C5, a quarter note B4, a quarter note A4, a quarter note G4, and a whole note F4.

poised on the wa-ters ev-er well-ing.

Musical notation for the sixth line of lyrics, consisting of a single staff with a treble clef and a common time signature. It features a series of notes: a half note G4, a quarter note A4, a quarter note B4, a quarter note C5, a quarter note B4, a quarter note A4, a quarter note G4, and a whole note F4.An empty musical staff with a treble clef and a common time signature.

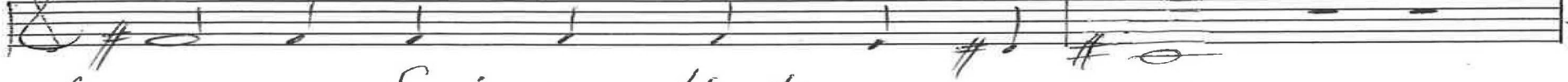
p. 1/5 Psalm 24 Chris Nelson 2017



11-9
10-20
3-22



3. Certainly our blessing is peace,



pleasures of joy that never cease



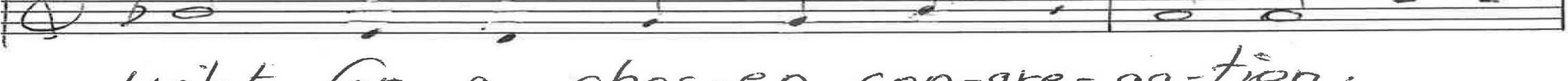
those on the path to their sal-vation,



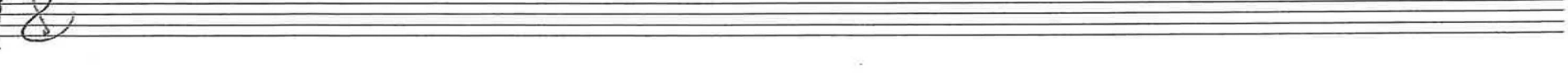
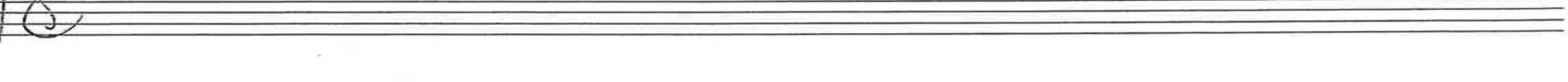
the pure in heart seek-ing God's face,



whose pre-sence is our hid-ing place,

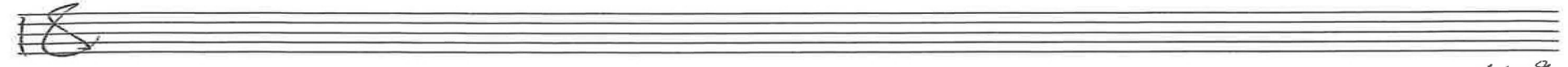


light for a chos-en con-gre-gation.



p. 3/5 Psalm 24 Chris Nelson 2017

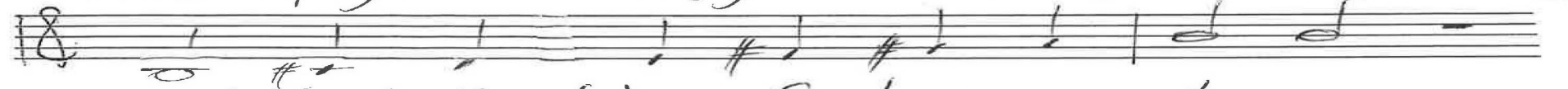
11-19
10-20
3-22



4. Raise your arch-es, christ-en your floors,



lift up your heads, you an-cient doors,



grant that the king of glo-ry en-ter.



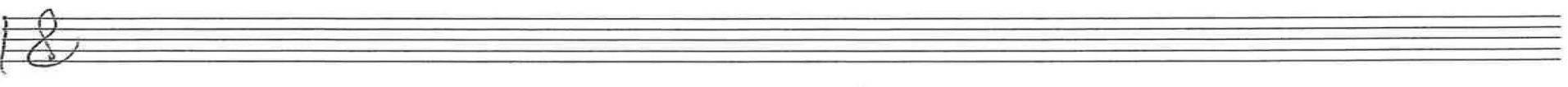
And who is this glo-ri-ous king?



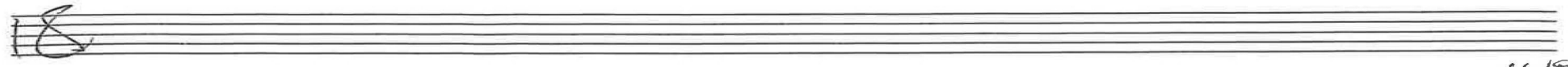
The Lord, to whom we glad-ly cling,



who's so cou-ra-geous at the cen-ter!



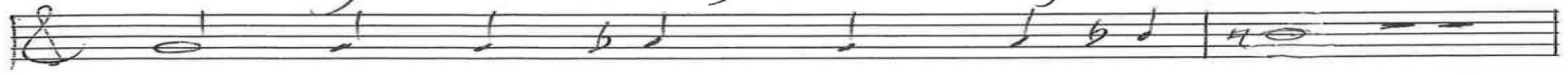
p. 4/5 Psalm 24 Chris Nelson 2017



11-19
10-20
3-22



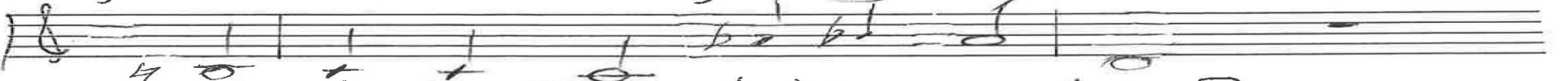
5. Raise your arch-es, chris-ten your floors,



lift up your heads, you an-cient doors,



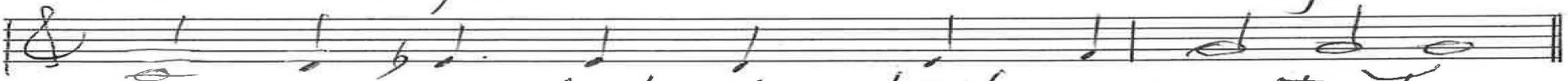
grant that the king of glo-ry en-ter.



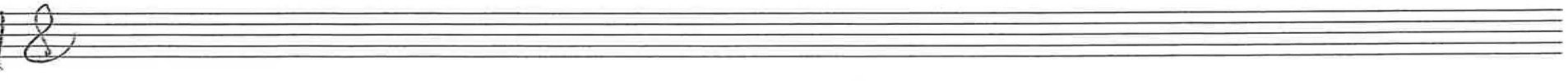
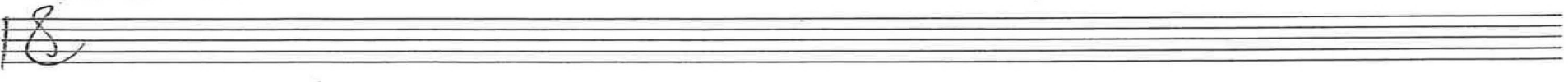
And who is this glo-ri-ous king?



The Lord for whom we cheer and sing,



still in con-trol, the chief pre-sen-ter!



p. 5/5 Psalm 24 Chris Nelson 2017

ALL

Intonation

1. God is making claims

9-19

10-20

6-21

5-22

10-22

3-23

5-23

1-24

prz

In G

Organ p. 1/4

Psalm 24

ALL

2. Who is going on up

In Bb

up with the Lord in holy places

whole tone

Chris Nelson 2018

Handwritten musical score for the first system, featuring a treble clef, a key signature of two flats, and a 4/4 time signature. The notation includes a melody line with eighth and quarter notes, and a bass line with whole notes. Chords are indicated by letters and accidentals above the staff.

9-19
10-20
6-21
7-22
18-22
3-23
5-23
1-24

Handwritten musical score for the second system, including the lyrics "Certainly" and "In E". The notation continues with a treble clef and a key signature of two flats. A "w" is written above the staff.

Handwritten musical score for the third system, including the lyrics "those on the path to their salvation". The notation features a treble clef and a key signature of two sharps.

Handwritten musical score for the fourth system, continuing the melody and bass line with various chord markings.

Handwritten musical score for the fifth system, including the lyrics "ALL In A (v. 2)" and "Raise your arches". The notation features a treble clef and a key signature of two flats.

Organ p. 2/4

Psalm 24

Chris Nelson: 2018

19
20
21
22
23
24

Organ p. 3/4

ALL^{7th}

5. Raise your arches

INC-E^b

Subito SW

Psalm 24
Chris Nelson 2018

Handwritten musical score for the first system. The treble clef staff contains a melody starting with a quarter note G4, followed by eighth notes A4, B4, C5, D5, E5, F5, G5, and a final quarter note G5. The bass clef staff contains chords and bass notes: B# (G2, F#2), B# (G2, F#2), Bb (G2, F2), Bb (G2, F2), F# (G2, F#2), F# (G2, F#2), F# (G2, F#2), and F# (G2, F#2). There are also some handwritten annotations like 'p' and 'd' above the notes.

3 19
 10 20
 6 21
 3 22
 10 22
 3-23
 5-23
 1-24

Organ P: 4/4

Empty musical staff system with treble and bass clefs.

Empty musical staff system with treble and bass clefs.

Empty musical staff system with treble and bass clefs.

Empty musical staff system with treble and bass clefs.

Psalm 24
 Chris Nelson 2018