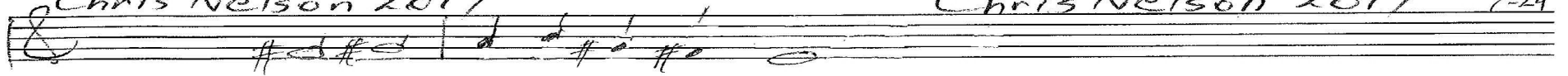


Read me, Lord  
Psalm 86

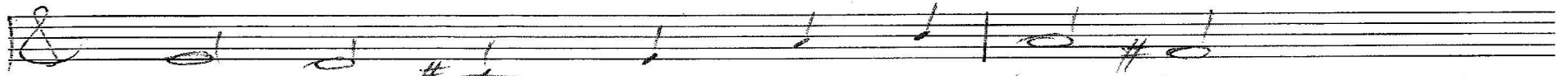
Chris Nelson 2017

Chris Nelson 2017

1-20  
10-20  
3-22  
1-24



Intonation



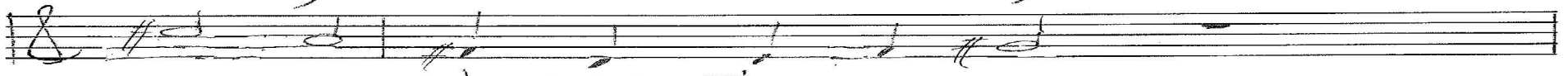
1. Read me, Lord, and be ob-serv-ant.



Keep my soul and save your serv-ant.



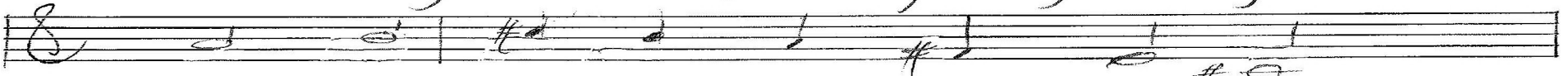
Need-y, des-ti-tute and shy,



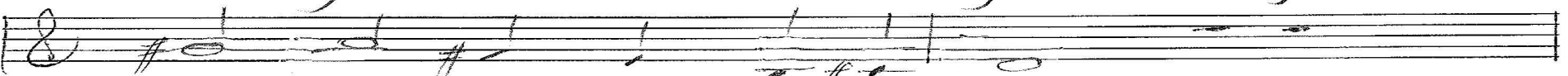
to your prob-ing I re-ply.



You are gra-cious, and for-giv-ing



those you res-cue while they're liv-ing.



Give me rea-son to re-joice



as I raise to you my voice.

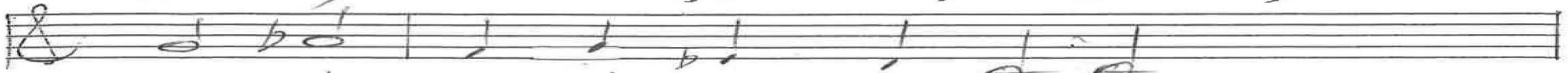
p. 1/3 Psalm 86 Chris Nelson 2017



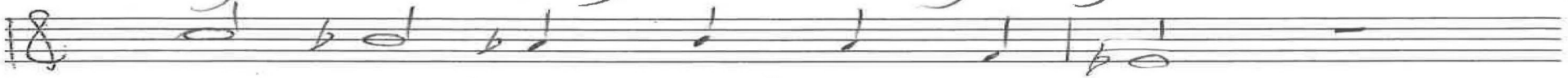
1-20  
10-20  
3-22  
5-23



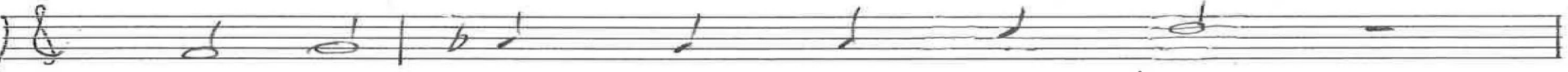
2. Hard-ly breath-ing, bare-ly sigh-ing,



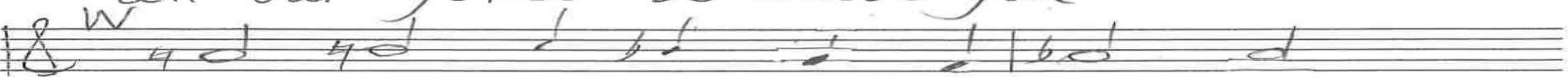
on your mer-cy I'm re-ly-ing.



There's no God that can com-pare,



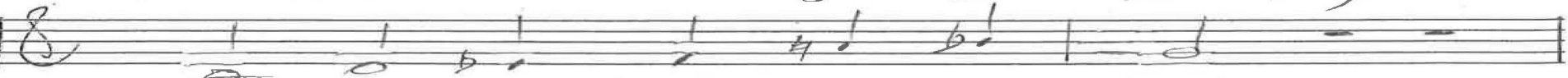
all our yokes be-cause you bear.



You made na-tions with a sto-ry



who would bow and give you glo-ry.



When my feet have had their bath



I would al-so walk that path.



p. 2/3 Psalm Eb Chris Nelson 2017

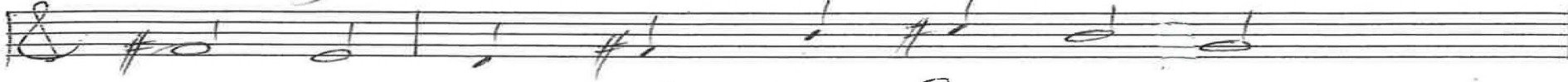
18

1-20  
10-20  
3-22

ALL



3. For your sake will I en-deav-or



dul-cet praise to sing for-ev-er.



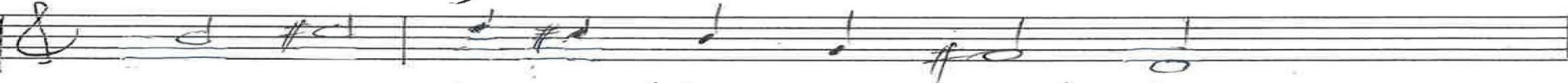
Lord, you draw me with your breath



from the depths of sin and death.



Seat-ed high a-bove all oth-ers,



so de-vot-ed like our moth-ers,



give, as proof of good-ness done,



mar-vels, yours, of oth-ers, none.



p. 3/3 Psalm 86 Chris Nelson 2017

ALL

Intonation

Gt

1. Read me, Lord

Handwritten musical notation for the first system. It consists of two staves: a guitar staff (Gt) and an organ staff. The guitar staff has a treble clef and a key signature of one sharp (F#). The organ staff has a bass clef and a key signature of one sharp (F#). The music is in 8/8 time. The guitar part starts with a whole note chord (F#4, A4, C#5) and continues with a melodic line. The organ part provides a harmonic accompaniment with chords and single notes.

9-19  
 20-21  
 22-23  
 24-25  
 26-27  
 28-29  
 30-31

In A

Handwritten musical notation for the second system. It consists of two staves: a guitar staff and an organ staff. The guitar staff has a treble clef and a key signature of one sharp (F#). The organ staff has a bass clef and a key signature of one sharp (F#). The music is in 8/8 time. The guitar part continues the melodic line from the first system. The organ part provides a harmonic accompaniment with chords and single notes.

Handwritten musical notation for the third system. It consists of two staves: a guitar staff and an organ staff. The guitar staff has a treble clef and a key signature of one sharp (F#). The organ staff has a bass clef and a key signature of one sharp (F#). The music is in 8/8 time. The guitar part continues the melodic line. The organ part provides a harmonic accompaniment with chords and single notes.

M

2. Hardly breathing

in C

Handwritten musical notation for the fourth system. It consists of two staves: a guitar staff and an organ staff. The guitar staff has a treble clef and a key signature of one sharp (F#). The organ staff has a bass clef and a key signature of one sharp (F#). The music is in 8/8 time. The guitar part continues the melodic line. The organ part provides a harmonic accompaniment with chords and single notes.

Handwritten musical notation for the fifth system. It consists of two staves: a guitar staff and an organ staff. The guitar staff has a treble clef and a key signature of one sharp (F#). The organ staff has a bass clef and a key signature of one sharp (F#). The music is in 8/8 time. The guitar part continues the melodic line. The organ part provides a harmonic accompaniment with chords and single notes.

Organ P. 1/3 Psalm 86 Chris Nelson 2017



W

9-19  
10-20  
6-21  
7-22  
9-22  
5-23  
1-24

I would also walk that path

ALL

3. For your sake

In B (v.l)

Organ p. 2/3 Psalm 86 Chris Nelson 2017

Handwritten musical notation for the first system. The top staff is in treble clef and the bottom staff is in bass clef. The key signature has one sharp (F#). The first two measures are bracketed together with a '1' below them. Annotations include '8va' above the first measure and '3m' above the second measure.

9-19  
 10-20  
 6-21  
 3-22  
 10-22  
 5-23  
 1-24

Handwritten musical notation for the second system. The top staff is in treble clef and the bottom staff is in bass clef. The key signature has one sharp (F#). A bracket under the first two measures is labeled '1'.

Empty musical notation for the third system, consisting of a treble clef staff and a bass clef staff.

Empty musical notation for the fourth system, consisting of a treble clef staff and a bass clef staff.

Empty musical notation for the fifth system, consisting of a treble clef staff and a bass clef staff.

Organ P. 3/3 Psalm 86 Chris Nelson 2017